

CHEVRON-MX

Connected Chevron LED Enhanced Signs



carmanah®
MX Series

Alert drivers to changes in horizontal alignment and reduce road departures with highly configurable, connected flashing signs.

- ✓ Every system ships with **3 years of free connectivity** and remote system access via MX Cloud™
- ✓ Ultra-bright simultaneous flash pattern
- ✓ Radar-activated or 24/7 operation
- ✓ Flexible design allows system to be tailored to any curve
- ✓ Actionable email and text alerts
- ✓ 'Smart module' design and smartphone app provide easy installation and maintenance
- ✓ Solar Power Report (SPR) prepared for every location

Free out-of-the-box connectivity

All CHEVRON-MX systems have connectivity embedded into the hardware. From the moment a system receives power, it connects both locally to the MX Field App and remotely to MX Cloud, providing convenient remote access to system locations, statuses and settings.

Timely and actionable alerts

Cities can enable email and text alerts so they can know the minute there's an issue, be it a knockdown, dead battery or something else. Detailed location and module information reduce downtime and boost site visit efficiency while providing optimal citizen safety.

Comprehensive asset visibility and data collection

CHEVRON-MX systems can be outfitted with optional radar kit that triggers LEDs only when a vehicle is approaching. The radar can detect vehicles at up to 1,000 feet away, and can be customized for detection speed, sensitivity, vehicle direction, and more.

Long-lasting, reliable operation

Every CHEVRON-MX is built to last with durable, weatherproof aluminum construction and vandal-resistant wireless antennas. Solar-powered models are solar-sized to project locations, backed by a Solar Power Report (SPR) to prove year-round sustainability.



MX Series

Connective Capabilities



MX CLOUD
(REMOTE)



MX FIELD APP
(LOCAL)

What's a Solar Power Report™ (SPR)?

No matter where you install your solar-powered system, your product should be carefully sized for its location to ensure it will be operational for the long-term.

Over the last 20+ years, our engineers have developed a field-proven software simulation that helps us replicate the real-life conditions of your project location—and determine the best solar-powered solution for your project.

Learn more about our process at carmanah.com/spr



Buy America/
BABA compliant



3-year limited
warranty

CHEVRON-MX

Connected Chevron LED Enhanced Signs



carmanah® MX Series

carmanah.com | traffic@carmanah.com | 1-844-412-8395

MX LED MODULE (W1-8 SIGN)



18 x 24"
457 mm x 610 mm



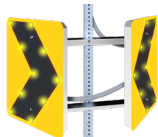
24 x 30"
609 mm x 762 mm

MX LED Sign Module	Meets MUTCD Standards for color, flash pattern, and dimming 3M High Intensity Prismatic or Diamond Grade retroreflective sheeting and components UV-resistant polycarbonate channels and waterproof housings protect wiring; includes fully integrated junction box Up to 10 signs per linked network
Flash Pattern	Radar activation or 24/7 flashing

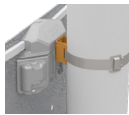
MX LED SIGN MODULE MOUNTING



Single Sided



Double Sided



Standard Banding



Through Bolt



U-Bolt

RADAR DETECTION KIT



24 GHz radar unit detects vehicles
Radar technology for accurate detection at night and in adverse weather conditions
Adjustable radar parameters, such as detection speed, sensitivity, trigger event settings and duration, and others
3rd-party tested radar detection range to 1000 ft
Universal bracket mounts to pole with standard banding, through bolts, U-bolts, band clamps, and more

ADVANCE WARNING SIGN





To enhance your horizontal alignment sign treatment, additional advance warning signs are available:

[SPEEDCHECK-AS](#): Radar activated advisory speed sign

[R247-MX](#): LED sign with static plaque

INCLUDED WITH EVERY SYSTEM

MX Subscriptions	3 years out-of-the-box remote connectivity with MX Lite See all MX subscriptions
MX Cloud	MX Cloud for remote health status monitoring, email/SMS alerts, scheduling, asset management, programming and more
MX Field App	Bluetooth® mobile app for on-site setup, local access to default settings, calendar scheduling, system health status and more  
Warranty	3-year limited warranty on MX system 1-year limited warranty on batteries
Support	Carmanah's North American product support technologists available for solution building, solar sizing and troubleshooting 24/7 access to Carmanah's online Product Support Center

MX POWER MODULES

Solar	12 VDC operation, solar sized to specific geographic location Includes 12-month Solar Power Report to ensure sustainability System designed for 5+ year battery life Replaceable, recyclable, sealed, maintenance-free AGM batteries offer the widest temperature range and longest life
AC (only MX 300/400)	100-240 VAC in standard configurations
Construction	Weatherproof, gasketed enclosure with vents for ambient air transfer (NEMA 3R) Lockable door Cabinet systems include Type II lock option (standard for MX 400) Corrosion-resistant aluminum with stainless steel hardware Raw aluminum finish or black powder-coated



	MX 100	MX 200	MX 300	MX 400
Type	Integrated solar + battery	Integrated solar + battery	Separate solar + cabinet	Separate solar + cabinet
Housing Dimensions & Weight (w/o batteries)	12.6 x 13.6 x 5.3" 320 x 345 x 135 mm 5 lb (2.3 kg)	30 W version: 18.3 x 15.7 x 5.8" 465 x 399 x 147 mm 11 lb (5.0 kg) 50 W version: 18.3 x 26.3 x 5.8" 465 x 668 x 147 mm 14 lb (6.4 kg)	16.7 x 11.3 x 7.0" 424 x 287 x 178 mm 10 lb (4.5 kg) AC version weight: 12 lb (5.4 kg)	21.9 x 16.1 x 8.3" 556 x 409 x 211 mm 19 lb (8.6 kg) AC version weight: 21 lb (9.5 kg)
Mount Kits	Top of Pole Mount	Side of Pole Mount	Top of Pole Mount	Side of Pole Mount
Batteries	1-2x 7 Ah	1-2x 18 Ah	1x 18, 35 or 55 Ah	1x 35, 55 or 100 Ah
Solar	15 W	30 or 50 W	50, 80 or 170 W	50, 80 or 170 W
Solar Dimensions & Weights	See housing dimensions above	See housing dimensions above	50 W: 26.3 x 21.2" (668 x 538 mm) 10 lb (4.5 kg) 80 W: 30.7 x 26.5" (780 x 672 mm) 13 lb (5.9 kg) 170 W: 59.1 x 26.3" (1500 x 668 mm) 25 lb (11.3 kg)	

WIRELESS COMMUNICATION AND DATA COLLECTION

Local	MX Field App (Bluetooth®)
System-To-System	Linked MX systems flash in sync up to 1,000 ft (305 m) away
Remote	MX Cloud (cellular)
Location & Time	GPS

The Bluetooth® word mark and logos are registered trademarks owned by Bluetooth SIG, Inc. and any use of such marks by Carmanah Technologies is under license. Other trademarks and trade names are those of their respective owners. Android is a trademark of Google LLC.

Specifications subject to local environmental conditions, and may be subject to change.

All Carmanah products are manufactured in facilities that are certified to ISO quality standards.

"Carmanah" and Carmanah logo are trademarks of Carmanah Technologies Corp.

© 2023, Carmanah Technologies Corp. Document: Carmanah_DATA_CHEVRON-MX_RevB