

TRANS/INE
INDUSTRIES



EXIT 1 1/4 MILES

traffic control products,
pavement marking equipment
signs and vinyl graphics



TRANEX

CENTERLINE

FLTRANSCOR

Transline Industries provides traffic control products, pavement marking equipment, signs, and vinyl graphics. Transline has three established brands - Trantex, Centerline Supply, and Florida Transcor. Our business has been thriving since 1984, having grown to ten locations throughout Texas, Florida, Louisiana, and Arizona. Our goal is to provide a one stop shop with personalized customer service for contractors, government municipalities, and the private sector.



TRANTEX

Houston Office • 3310-D Frick Rd., Houston, TX 77086 • 281.448.7711
Louisiana Office • 1475 Beaulieu Lane, Port Allen, LA 70767 • 225.224.0350

CENTERLINE

DFW Office • 530 Jesse St., Grand Prairie, TX 75051 • 972.647.8300
Austin Office • 9201 Brown Lane, #152, Austin, TX 78754 • 737.800.9905
San Antonio Office • 9484 Corporate Dr., Selma, TX 78154 • 210.224.4600
Phoenix Office • 1301 East Hadley St., Phoenix, AZ 85034 • 602.258.3142

FLTRANSCOR

Jacksonville Office • 6683 Stuart Ave., Jacksonville, FL 32254 • 904.783.3302
Miami Office • 2500 West 84th St., Suite 7, Hialeah, FL 33016 • 305.827.3240
Orlando Office • 325 Commercial St., Casselberry, FL 32707 • 321.304.2447
Tampa Office • 5402-B Pioneer Park Blvd., Tampa, FL 33634 • 813.882.3168



BUYBOARD #'S

Centerline & Trantex	#608-20
Florida Transcor	#657-21

PAVEMENT MARKING SUPPLIES

Traffic Paint, Asphalt Repair, Thermoplastic, Glass Beads	Page 2-3
Ceramic Traffic Buttons, Temporary Overlay Markers, Reflective Pavement Markers	Page 4-5
Permanent & Temporary Tape, Preformed Thermoplastic	Page 6-9
Preformed Thermoplastic Equipment, Heat Gun, Torch, Adhesives	Page 10
Rebounding Parking Lot Signs & Bollards, Speed Bumps, Concrete Car Stops	Page 11
Rubber Speed Bumps, Car Stops, Speed Cushions, Speed Tables & Humps	Page 12-13
Rubber Mini Speed Humps, Bollard Covers	Page 14
Measuring Wheels, Layout Accessories, Marking Paint	Page 15
Cycle Lane Separator, Planter, Zipper, Vectorial Modular System	Page 16-17
Stencils	Page 18

TRAFFIC CONTROL PRODUCTS

ADA Detectable Warnings, Lane Separator Curb System	Page 19
In Street Crosswalk Sign, Portable Pedestrian Sign	Page 20
Delineator Posts, Driveable Delineators, Soil Mount Posts	Page 21-22
Barrier/Guardrail & Top Mount Delineators, Barricades - Type I, II & III	Page 23-24
Traffic Barrels, Cones, Channelizer, Stop/Slow Paddles, Panel-Lite	Page 25
Barricade Lights, Solar Arrow Board, Message Boards, LED Mini Lightbars	Page 26-27
Radar Speed Signs, RT1 Radar Speed Trailer, Flashing Traffic Signs	Page 28-29

SIGNS & HARDWARE

Post Drivers, Mailbox Assembly	Page 30-31
Sign Posts, Sign Post Puller	Page 32-33
Sign Mounting Hardware	Page 34-35
Roll Up Signs & Stands, St.Toppers/Markers, Overhead Guide Signs, Custom Signs	Page 36-37
Regulatory Traffic Signs, Object Markers, Warning Traffic Signs, St. Name Signs	Page 38-43

GRAPHICS & FLEET DECALS

Vinyl Graphics, Fleet Graphics, Vehicle Wraps, and Design	Page 44
---	---------

EQUIPMENT

Thermoplastic Applicators	Page 45-49
Thermoplastic Premelters	Page 50-53
Bitumen Applicators	Page 54-55
Line Removers, Graco Grinders, and Scarifier	Page 56-58
Graco LineLazer Walk-Behind Paint Stripers	Page 59-60
LineDriver, Graco LineLasers & Ride-on Paint Stripers, TapeLazer	Page 61-64
Airless Line Stripers	Page 65-66
Graco RoadPak Striping System, RoadLazer Roadpak System	Page 66-69
Graco Linelazer Major Accessories	Page 70

SAFETY APPAREL

Safety Vests, Hard Hats, Protective Eyewear	Page 71-72
---	------------

pavement marking supplies

TRAFFIC PAINT

We provide high quality traffic paint to government agencies, contractors, parking lot strippers, property management companies, and other professional strippers. We have a constant supply in stock in all locations, ready for pick-up, delivery, or shipment.

Product	Dry Time at 77°F	Colors
Regular Dry Waterbase	45 minutes	White, Yellow, Red, Blue, Black
Quick Dry Waterbase	10 minutes	White, Yellow, Red, Blue, Black
Fast Dry Waterbase	15 minutes	White, Yellow, Red, Blue, Black
MMA 1.1 Roadzilla	<30 minutes	White, Yellow
Gorilla Traffic Paint	15 minutes	White, Yellow, Red, Blue, Black
Armadillo Traffic Paint	15 minutes	White, Yellow, Red,
Oil Base (Alkyd) Traffic Paint	15 minutes	White, Yellow, Red, Blue, Black
Chlorinated Rubber	15 minutes	White, Yellow, Red, Blue, Black
Low Voc	10 minutes	White, Yellow, Red, Blue, Black
BioStripe – 5 gallon	20 minutes	White, Yellow, Red, Blue, Black
AthletiCoat 1170 Series - 5 gallon	10 minutes	White, Red, Blue
Toluene – 5 gal., 55 gal., refill		

Sold by pail or discount pallet pricing.

Average application rate for parking lot striping is 320 LF of 4" line applied at 15 mils per gallon.



ASPHALT REPAIR

Perma-patch is a high-performing pavement repair product designed for general use in all weather conditions. Proven most durable for road and highway repair. Flows easily with application in even the coldest conditions.



- Use directly in potholes filled with water
- No mix or special preparation
- Bonds permanently to asphalt, concrete, steel, wood, and other hard surfaces.
- 2 year shelf life

THERMOPLASTIC



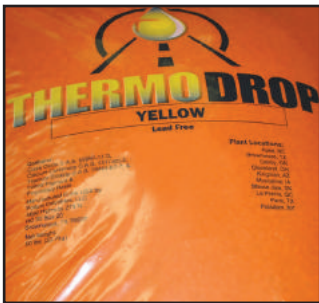
Thermoplastic pavement markings must be applied with specialized equipment. Additional colors and hydrocarbon material are available by special order.

Product

Colors

ThermoDrop DOT & C/C	White Yellow	Sold by bag or pallet
DOT Spec	White	Sold by pallet only
Alkyd Granular	Yellow	
City/County Spec	White	Sold by bag or pallet
Alkyd Granular	Yellow	
AASHTO Spec	White	Sold by pallet only
Thermoseal	Clear	Sold by 5 gal. pail

Sold by 50 lb. bag or discount pallet pricing.



GLASS BEADS

Enhance visibility with reflective glass beads.



See pages 45-53 for applicators and premelters.

Product

Specification

Common Applications

Standard Drop On	TT-M-247 Type I and II	Roadways & Parking Lots
Federal Glass Beads	TT-B-1325D Type I	Roadways & Airports
Hi Index Airport Beads	TT-B-1325D Type III	Airport Runways
Large Beads	L511 Type III	St., County & City Roads
Double Drop Lg. Beads	E16 Type IV	High Build Paint
Ultra 1.9 Beads		Roadways
Anti-Skid Ground Glass		Slip Resistant Surfaces

Average application rate of glass beads is 6 lbs. per one gallon of paint.

Average application rate of high index airport beads is 10 lbs. per one gallon of paint.



Sold by 50 lb. bag or discount pallet pricing.

CERAMIC TRAFFIC BUTTONS

Ceramic traffic buttons provide ultimate daytime/night-time visibility and a cost-effective alternative to painted lines. They provide maximum durability and cause a "rumble effect" to alert drivers when changing lanes. When properly installed, traffic buttons can last three to four times longer than painted stripes.

Reflective Ceramic Buttons

Part No.

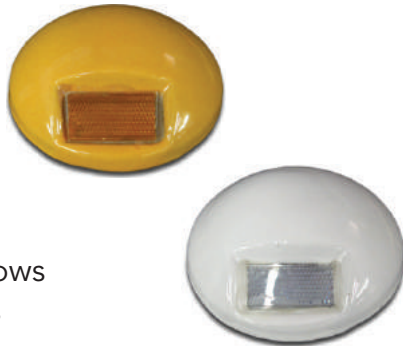
4" White 1-Way Clear Button	10201-000
4" Yellow 1-Way Amber Button	10200-000
4" White 2-Way Clear Button	10206-000
4" Yellow 2-Way Amber Button	10203-000
4" White 2-Way Clear / Red Button	10207-000
6" Wht. 1-Way Clear Channel Marker	10301-006
6" Yell. 1-Way Amber Channel Marker	10300-006
8" Wht. 1-Way Clear Channel Marker	10301-008
8" Yell. 1-Way Amber Channel Marker	10300-008

Adhesive Requirements for Button Installation

Type	Qty	Requirement
4" Button	3	1 lb. Bitumen
4" Button	5-9	9 oz. Epoxy
4" Button	15	(1) 600 cc Cartridge
4" Button	50	1 gal. Epoxy
4" Marker	50	1 gal. Epoxy
4" Marker	165	55 lb. Cube Bitumen
6" Button	1	1 lb. Bitumen
6" Button	25	1 gal. Epoxy
8" Button	1	(1) 5 gal. Bitumen
8" Button	15	1 gal. Epoxy

Traffic buttons are great for:

- City streets
- Safety zones
- Crosswalks
- Turn lanes
- Highways
- Center lanes
- Directional arrows
- Parking spaces
- Intersections



Reflective Ceramic Markers

Part No.

6" Wht. 2-Way Clear Channel Marker	10301-206
6" Yell. 2-Way Amber Channel Marker	10303-006
8" Wht. 2-Way Clear Channel Marker	10303-206
8" Yell. 2-Way Amber Channel Marker	10303-008
6" White 1-Way Clear Jiggle Bar	10601-000
6" Yellow 1-Way Amber Jiggle Bar	10600-000
6" White 2-Way Clear Jiggle Bar	10601-200
6" Yellow 2-Way Amber Jiggle Bar	10603-000

Non-Reflective Ceramic Markers

Part No.

4" White Non-Refl. Button	10210-200
4" Yellow Non-Refl. Button	10211-200
4" Black Non-Refl. Button	10212-200
6" White Non-Refl. Jiggle Bar	10610-000
6" Yellow Non-Refl. Jiggle Bar	10611-000
6" White Non-Refl. Channel Marker	10310-006
6" Yellow Non-Refl. Channel Marker	10311-006
8" White Non-Refl. Channel Marker	10310-008
8" Yellow Non-Refl. Channel Marker	10311-008



TEMPORARY OVERLAY MARKERS

- Temporary marking for asphalt operations
- One man operation
- Self-adhesive
- With or without covers



Temp. Overlay Markers Part No.

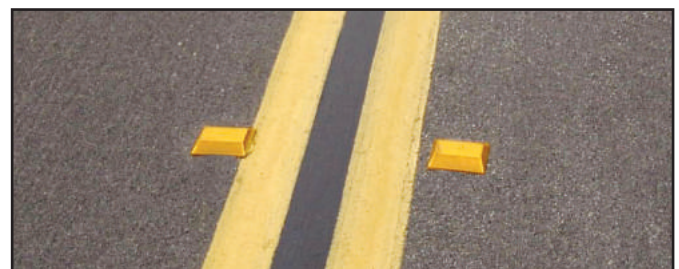
1-Way Ref Marker - White	10171-000
2-Way Ref Marker - Yellow	10170-000

REFLECTIVE PAVEMENT MARKERS

Reflective pavement markers easily define traffic lanes during the day and night. Use reflectors to mark multi-lane highways, two-lane roads, roadways, construction zone entrances and exits, and even individual spaces in small parking lots. Pavement markers provide ultimate wet night visibility and can be used on many surfaces. Available in a range of colors to suit a variety of traffic and/or parking scenarios.

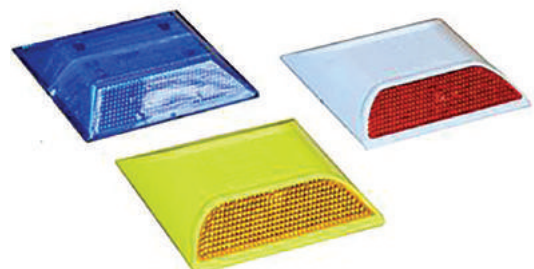


- Available with 1-way reflection or 2-way reflection
- Meets all MUTCD requirements
- Entrance and exit color coding
- Center line marking
- Lane marking
- Highway edge marking
- Construction zones



Permanent Reflective Markers Part No.

1-Way Reflective White	10101-200
1-Way Reflective Amber	10100-200
2-Way Reflective Amber	10103-200
2-Way Reflective White	10106-200
2-Way Reflective Red / White	10107-200
2-Way Reflective Green	10108-000
2-Way Reflective Blue	10105-000



FOIL BACK REMOVABLE TAPE

Foil Back Tape		Part No.
4" x 150 ft	White	40100-045
4" x 150 ft	Yellow	40101-045
4" x 300 ft	White	40100-040
4" x 300 ft	Yellow	40101-040
6" x 150 ft	White	40100-065
6" x 150 ft	Yellow	40101-065
6" x 300 ft	White	40100-060
6" x 300 ft	Yellow	40101-060



TEMPORARY REMOVABLE TAPE

Rubber Back Tape		Part No.
4" x 90 ft	White or Yellow	40200-049
6" x 90 ft	White or Yellow	40200-069
4" x 360 ft	White or Yellow	40200-047
6" x 360 ft	White & Yellow	40200-067
8" x 90 ft	White & Yellow	40200-089
12" x 90 ft	White & Yellow	40200-129

PERMANENT HIGH-PERFORMANCE TAPE



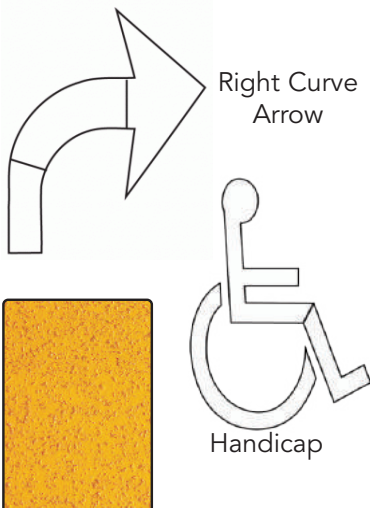
Permanent Tape		Part No.
4" x 360 ft	White	40400-004
4" x 360 ft	Yellow	40401-004
6" x 360 ft	White	40400-006
6" x 360 ft	Yellow	40401-006



PERMANENT TAPE

Symbols

- Available in white or yellow
- 60 mil (1.52mm) thickness
- Suitable for both warm and cold climates
- Quick setup, durable and peel resistance

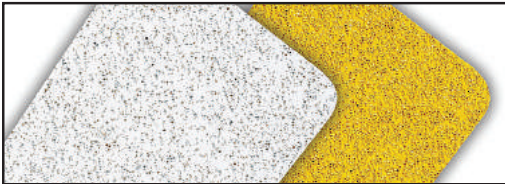


This tape will hold fast onto highways, streets, intersections, and other high-traffic areas, making it ideal for your long term marking requirements. No need to wait for the tape to "set" or dry; it can be driven over or walked on almost immediately after installation. This tape is pigmented with lead-free polymeric paint and contains glass beads for increased visibility and longevity.

Symbols	Size	Part No.	Box
Straight Arrow	115.2" x 38.4"	40300-STA	4/Box
Left Curve Arrow	96" x 73"	40300-OLA	4/Box
Right Curve Arrow	96" x 73"	40300-ORA	4/Box
Elongated Left Arrow	145" x 31"	40300-ELA	2/Box
Lane Drop Right Arrow	216" x 62"	40300-LRA	1/Box
Lane Drop Left Arrow	216" x 62"	40300-LLA	1/Box
Railroad Crossing Package	R"72", X16" x 42"	40300-XXR	1/Box
Railroad Crossing Package	R"78.75", X16" x 42"	40300-XXXR	1/Box
Bicycle 4ft	48" x 25"	40300-BIC	2/Box
Right Bicycle 6ft	72" x 41"	40300-RBIC	2/Box
Left Bicycle 6ft	72" and 1"	40300-LBIC	2/Box 4/Box
Bicycle Sharrow	112" x 40"	40300-SBIC	4/Box
Bicycle Lane	40" x 72"	40300-BICL	2/Box
Straight Arrow Bicycle 6ft	72" x 24"	40300-SABIC	2/Box
Handicap 4ft	48" x 35"	40300-HCM	1/Box

PERMANENT TAPE

Word Legends



Word Legends	Size	Part No.	Box
"ONLY" Legend	96" High	40300-ONL	2/Box
"STOP" Legend	96" High	40300-STO	1/Box
"AHEAD" Legend	96" High	40300-AHE	1/Box
"SCHOOL" Legend	96" High	40300-SCH	1/Box
"XING" Legend	96" High	40300-XING	1/Box
"YIELD" Legend	96" High	40300-YIE	1/Box
"BIKE" Legend	96" High	40300-BIKE	1/Box
"R" for Railroad Crossing	72" x 11.5"	40300-OOR	2/Box

Glass beads and anti-skid particles embedded into a lead-free polymeric paint yield high reflectivity and resistance to wear.

PREFORMED THERMOPLASTIC

Preformed thermoplastic is ideal for all types of roads and pavements including concrete. Approved for use by many State Departments of Transportation.

- Easy to install
- No large or expensive equipment necessary
- Designed for use in intersections where maximum wear is present
- Ensures enhanced visibility, durability, and worker environmental safety



Available in 90 mil and 125 mil thickness.

Fig. Bike Lane Symbols

	Size	Part No.
A Bicycle Designated Lane	4' x 2'	40500-BLA
B Bicycle Designated Lane	8' x 6'	40500-BLB
C Bicycle Des. Lane (MUTCD)	6' x 3'4"	40500-BLD
D Shared Lane (MUTCD)	9'4" x 3'4"	40500-BLE
E Bicycle ONLY (MUTCD)	6' x 3'	40500-BLF
F Straight Arrow (MUTCD)	6' x 2'	40500-BLH
G BIKE	4' x 2'6"	40500-BIK4
H LANE	4' x 3'1"	40500-LNE4
I ONLY	4' x 2'10"	40500-ONL4

Fig. A Fig. B Fig. C



Fig. D



Fig. E



Fig. F



Fig. G



Fig. H



Fig. I



PREFORMED THERMOPLASTIC



Handicap Kit White/Blue



Handicap Symbol White

Handicap Markings Size / Spec Part No.

Handicap Symbol White	28" / FHWA/ADA	40500-HSW28
Handicap Symbol Blue	28" / FHWA/ADA	40500-HSB28
Handicap Symbol White	39" / FHWA/ADA	40500-HSW39
Handicap Kit White/Blue	40" x 40" / FHWA/ADA	40500-HCM40
Handicap Kit White/Blue	45" x 45" / Caltrans	40500-HCM45
Handicap Kit White/Blue	48" x 48"	40500-HCM
Lines Blue	4" x 3'	40504-004



Rolls & Flats Part No.

4" x 30' (roll)	4050X-004R
6" x 30' (roll)	4050X-006R
8" x 30' (roll)	4050X-008R
12" x 30' (roll)	4050X-012R
24" x 30' (roll)	4050X-024R
4" x 3' (lines)	4050X-004
5" x 3' (lines)	4050X-005
6" x 3' (lines)	4050X-006
8" x 3' (lines)	4050X-008
12" x 3' (lines)	4050X-012
16" x 3' (lines)	4050X-016
18" x 3' (lines)	4050X-018
24" x 3' (lines)	4050X-024

All rolls and flats are available in 90 mil and 125 mil thickness. Available colors in white, yellow, blue, and black. Many additional colors, widths, and special legends are available.

Word Legends Size Part No.

AHEAD	8 ft.	405XX-AHE
BUMP	8 ft.	405XX-BUM
BUS	8 ft.	405XX-BUS
CLEAR	8 ft.	405XX-CLE
EXIT	8 ft.	405XX-EXI
FIRE	8 ft.	405XX-FIR
KEEP	8 ft.	405XX-KEE
LANE	8 ft.	405XX-LAN
LEFT	8 ft.	405XX-LEF
MERGE	8 ft.	405XX-MER
MPH	8 ft.	405XX-MPH
ONLY	8 ft.	405XX-ONL
ONLY (YELLOW)	8 ft.	405XX-ONL
ONLY	10 ft.	405XX-ONL10
ONLY (YELLOW)	10 ft.	405XX-ONL10
PED CROSSING	8 ft.	405XX-PED
RIGHT	8 ft.	405XX-RIG
R (RAILROAD)	6 ft.	405XX-06R
RXR FHWA KIT		405XX-RRX
SCHOOL	8 ft.	405XX-SCH
SCHOOL (YELLOW)	8 ft.	405XX-SCH
SCHOOL	10 ft.	405XX-SCH10
SCHOOL (YELLOW)	10 ft.	405XX-SCH10
SIGNAL	8 ft.	405XX-SIG
SLOW	8 ft.	405XX-SLO
SLOW (YELLOW)	8 ft.	405XX-SLO
STOP	8 ft.	405XX-STO
THRU	8 ft.	405XX-THR
TURN	8 ft.	405XX-TUR
X-ING	8 ft.	405XX-XIN
X-ING (YELLOW)	8 ft.	405XX-XIN
YIELD	8 ft.	405XX-YIE



PREFORMED THERMOPLASTIC

Fig. Symbols	Size	Part No.
A Turn Arrow Standard Rev	8' x 6'1"	4050X-REV8
A Turn Arrow Standard Left	8' x 6'1"	4050X-OLA
A Turn Arrow Standard Right	8' x 6'1"	4050X-ORA
A Turn Arrow Rev	4' x 3'	4050X-REV4
A Turn Arrow Left	4' x 3'	4050X-OLA4
A Turn Arrow Right	4' x 3'	4050X-ORA4
B Straight Arrow Standard	9'6" x 3'3"	4050X-OSA
B Straight Arrow	6' x 2'	4050X-6SA
C Combo Arrow Standard Rev	12'9" x 7'2"	4050X-CAR
C Combo Arrow Standard Left	12'9" x 7'2"	4050X-OLC
C Combo Arrow Standard Right	12'9" x 7'2"	4050X-ORC
C 6' Combo Arrow Rev	6' x 3'10"	4050X-CAR6
D 13' Double Combo Arrow	13'2" x 11'2"	4050X-OCA
E Turn Arrow Elongated Rev	12' x 3'	4050X-ERA
E Turn Arrow Elongated Left	12' x 3'	4050X-AEL
E Turn Arrow Elongated Right	12' x 3'	4050X-AER
F Straight Arrow Elongated	12' x 1'8"	4050X-SAE
G Combo Arrow Elongated Rev	20' x 3'7"	4050X-ARE
G Combo Arrow Elongated Left	20' x 3'7"	4050X-AEL
G Combo Arrow Elongated Right	20' x 3'7"	4050X-AER
H Lane Drop Arrow Rev	18' x 5'6"	4050X-LER
H Lane Drop Arrow Left	18' x 5'6"	4050X-LAL
H Lane Drop Arrow Right	18' x 5'6"	4050X-LAR
I U-Turn Arrow Left	10' x 7'6"	4050X-UAL
J HOV Diamond Des. Lane	13'1" x 3'3"	4050X-HOV
K Shark's Teeth Yield Markings	12" x 18"	4050X-YIE12
K Shark's Teeth Yield Markings	16" x 24"	4050X-YIE16
K Shark's Teeth Yield Markings	24" x 36"	4050X-YIE24



Fig. A - FHWA Series B



Fig. B - FHWA / Complies with MUTCD



Available in 90 mil and 125 mil thickness.

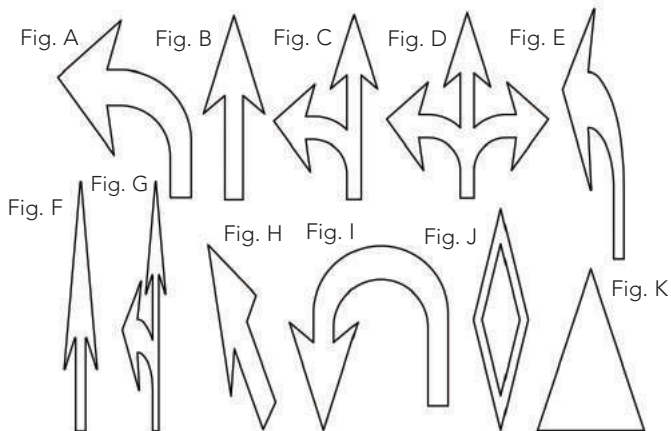


Fig. Letters/#s Size Part No.

A	LETTERS A THRU Z	4 in.	4050X-IND-4L
A	LETTERS A THRU Z	6 in.	4050X-IND-6L
A	LETTERS A THRU Z	12 in.	4050X-IND-12L
B	LETTERS A THRU Z	4 ft.	4050X-IND-4L
B	LETTERS A THRU Z	8 ft.	4050X-IND-8L
A	NUMBERS 0 THRU 9	4 in.	4050X-IND-4N
A	NUMBERS 0 THRU 9	6 in.	4050X-IND-6N
A	NUMBERS 0 THRU 9	12 in.	4050X-IND-12N
B	NUMBERS 0 THRU 9	4 ft.	4050X-IND-4N
B	NUMBERS 0 THRU 9	8 ft.	4050X-IND-8N

PREFORMED THERMOPLASTIC EQUIPMENT

QL2 Pro Heat Gun Part No. 50901-001



319,000
BTU head

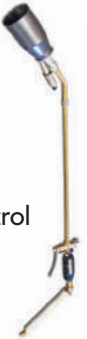
- Light weight - 2 lb design
- Quick click system
- Two heads, hose, and regulator

2000 EX Ripack Heat Gun Part No. 50901-000



- 200,000 BTU burner
- Also removes cold plastic and temporary tape
- Steady flame reduces scorching
- Adjustable pressure valve

Magnum Heating Torch Part No. 50901-100



- Includes 33 ft. hose
- Swivel hose end fitting
- Safety stand standard
- Compact nozzle allows optimal directional control

Choose from two torch options, and be sure to have an infrared thermometer when installing preformed thermoplastic.

ADHESIVES



Flexible Bitumen Adhesive



Epoxy



Two Part Epoxy Cartridge

Epoxy adhesive 600cc cartridge with retainer nut (install approx 15-4" markers)
Part No. 10705-000

Adhesives & Epoxies

	Part No.	Case/Size
Bitumen Adhesive 55 lb Box	10701-000	1980 lbs
Bitumen Flexible Adhesive 44 lb Box	10701-501	1584 lbs
Bitumen Melting Stick	10701-200	6 Sticks
4"x 4" Adhesive Butyl Pad	10709-000	100
5" x 5" Thermoplastic Pad (Blk, Ylw, Wht, Blue)	10714-000	150
600cc Epoxy Cartridge Dispensing Gun	50703-100	
600cc Epoxy Cartridge w/Retainer Nut	10705-000	6 Kits
Static Mixer for 600cc Cartridge	10791-000	6
2 Part Epoxy Tube Kit (20 oz.)	10722-000	6 Kits
2 Part Epoxy - Ten Gallon Kit (5A+5B)	10703-000	1 Kit
1 Part Adhesive Tube Kit (11 oz)	10701-700	12
1 Part Adhesive 1 Gallon Kit (1 Gal)	10702-000	12

APPLICATION RATES

Product	2.5 x 4.5" Base	4" Base	8" Base
Epoxy Tube Kit	15 per kit	12 per kit	3 per kit
2 Gallon Epoxy Kit	100 per gallon	50 per gallon	15 per gallon
Bitumen Adhesive	4 per lb	3 per lb	1 per lb
Bitumen Stick	30 per stick	20 per stick	6 per stick

Hand Activated Epoxy Dispenser

Eliminates hand mixing. Accurate complete mix when applying. Slide pre-filled disposable epoxy cartridge into chamber, install disposable static mixer, and dispense mixed epoxy in correct ratio with no mess.

Part No. 50703-000



REBOUNding PARKING LOT SIGNS & BOLLARDS



SlowStop® Flexible Bollards are a revolutionary energy-absorbing dynamic collision shield that does more than just block access. During a collision, the kinetic energy of the impact is progressively absorbed by an elastomer hidden in the base of this rebounding bollard. The post is able to tilt approximately 20 degrees as it progressively absorbs energy, softening the impact. After the impact, the post returns upright, leaving your guard intact and ready to perform again.

STA-RITE SIGN POSTS

Lightweight impactable aluminum sign posts use a reactive spring unit, allowing the sign to withstand bumper hits and return to original position without damaging the sign or vehicle. Ideal for high traffic parking lot locations, these signs are especially useful for lots without car stops and are easy to install. These highly durable yet light-weight signs use a white powder-coated aluminum post to prevent warping and remain straight even in harsh summer and winter conditions. The aluminum sign post is available with an outer yellow bollard constructed of durable plastic, simulating a formidable concrete barrier for added conspicuity.



Product

Part No.

48" Slow Stop Bollard 3' Dia.	30876-SB3
48" Slow Stop Bollard 4' Dia.	30876-SB4
48" Slow Stop Bollard 6' Dia.	30876-SB6
78" Sta-Rite Sign Post	30876-XWX
102" Sta-Rite Sign Post	30878-XWX

The 78" post is designed to place a handicap sign at 60" above ground level, per ADA specifications. The 102" post places the bottom of a 12" x 18" sign 7' above the surface, per MUTCD specification for pedestrian travel areas. The 102" sign comes in two pieces for ease of shipping.

PLASTIC SPEED BUMPS

Easy installation. All products are pre-drilled and include a choice of two hardware - lag screws and shields, or 12" spikes. Lag screws are recommended for asphalt or concrete where drilling holes is recommended. Steel spikes are recommended for use on asphalt.



Product

Part No.

6' Solid Speed Bump	10412-6XY
9' Solid Speed Bump	10412-9XY
4' Car-stop	10512-4XY
6' Car-stop	10512-6XY

CONCRETE CAR-STOPS



Mounting pins are included.

Concrete Car-Stops

Part No.

6' Round	10550-000
6' Hex	10551-000

- Chemical/weather resistant
- Speed bumps are 10" wide x 2" high
- Car-stops are 6" wide x 4" high (avail in blue, yellow, and gray)

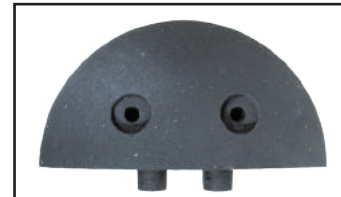
RUBBER SPEED BUMPS & CAR-STOPS



Hardware sold separately

Speed Bumps

- Resistant to weather, oil, salt, moisture, UV light, & temperature
- Will not warp, chip, or crack
- Never needs painting, durable striping
- Flexible, conforms to surface contours
- For traffic speeds 10 mph or less
- Install on asphalt or concrete
- Available in 6' and 4' sections



Optional endcaps provide a finished look and protect ends



Car Stops

- Use in parking lots and garages
- Protects garage walls, delineates spaces
- Available in 6' and 4' sections



Hardware sold separately

Product	Dimensions	Part No.
Speed Bump	72"L x 12"W x 2.6"H or 48"L x 12"W x 2.6"H	10421-6XY
End Cap for Speed Bump	12"L x 12"W x 2.6"H	10421-END
Car Stop	72"L x 6"W x 4.5"H or 48"L x 6"W x 4.5"H	10521-6XY



RECYCLED RUBBER SPEED CUSHIONS

Speed cushions are raised traffic calming devices placed across the road to slow traffic. These cushions are constructed from 100% recycled rubber material which can easily support the imposed loads of weight up to 75,000 pounds. Generally, cushions are 7, 10.5, 14 or 21 feet in length depending upon posted speed limits and to provide a less gradual lift making it necessary for residential vehicles to reduce their speed without coming to a halt. At 6' wide, they easily permit ERV passage without hindering speeds.



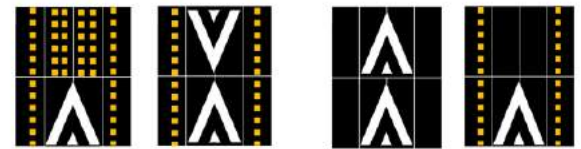
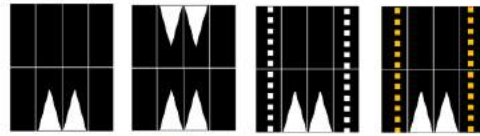
- All modules have patented interlocking tongue & grooves
- Creates a bond among modules
- Increases installed cushion vehicle impact resistance
- Enhances long-term stability and product performance



Cushions should be placed in a series with distances of 200 to 500 feet between sets.



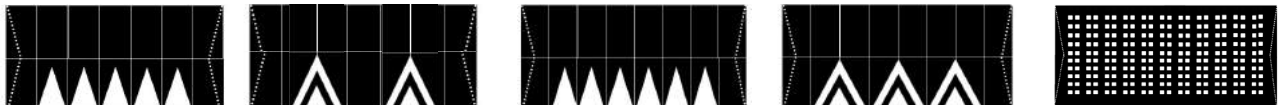
RECYCLED RUBBER SPEED TABLES AND HUMPS



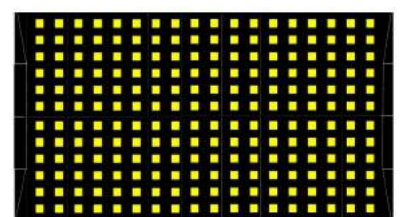
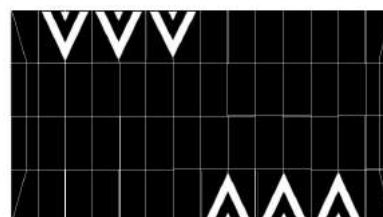
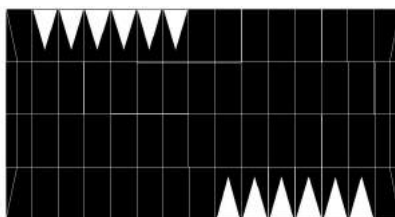
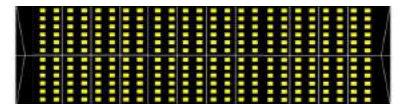
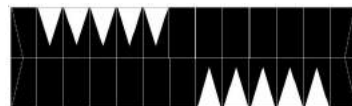
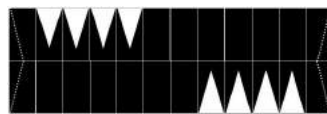
- Will not fade or crack
- Same profile at every location
- Can be removed, stored, relocated and reinstalled
- No heavy equipment needed for installation



We offer a variety of reflective surface markings from MUTCD dual arrows, to industry standard arrows, or unique yellow or white square markings. Easily mix these markings as you like to even attain more patterns.



DESIGN AND PATTERN EXAMPLES



RUBBER MINI SPEED HUMPS

- High-impact, high-traction rubber
- Embedded durable reflective tape
- Interlocking tongue-and-groove system
- Includes installation hardware
- Emergency vehicle friendly
- End caps protect module ends from damage



Individual speed hump module

- Parking lots and garages
- Gated communities
- School zones
- Retail stores
- Hospitals

Product

Part No.

35.5" x 19.5" x 2.1" Mini Speed Hump	10453-500
35.5" x 17.5" x 2.1" End Caps (M, F)	10453-501



BOLLARD COVERS



Bollard Covers are protective sleeves that easily fit over posts. Covers save time and costs by eliminating constant scraping and repainting. The plastic part contains ultraviolet and antistatic additives that withstand extreme temperatures. Custom colors, symbols, and company logos are available.

- Installs easily
- Slides over existing post
- Designed for all weather conditions
- Ultraviolet stable for five years
- Increase visibility and safety
- Improves property appearance
- Wide selection of sizes

Bollard Cover

Part No.

4" Bollard Cover	30191-004
6" Bollard Cover	30191-006
8" Bollard Cover	30191-008



*Many styles and colors are available.
Contact us for more information.*

MEASURING WHEELS

DW-PRO - Part No. 70109-000

12.5" diameter measuring wheel designed and built with the professional user in mind. DW-PRO's are ideally suited for rolling over longer distances and rough surfaces. Measures to 9,999 ft. Wide stance folding stand. Belt driven counter for long life and smooth operation. Counter also works in reverse. Folds for easy carrying and storing. Metric or standard.



Count-clear control mounted on the pistol grip



RolaTape Wheel 32-400 - Part No. 70104-000

When a tough, all-purpose measuring wheel is needed, nothing fills the order like the RolaTape 400 Series. Four-inch circumference handles the toughest measuring needs for heavy construction, large commercial operations, utility companies, land surveying, and other critical measuring applications. Mechanical counter type measures up to 100,000 ft. or meters.

The RRT12 - Part No. 70109-100

A premium gear and shaft measuring wheel system packed with every feature you would ever want. Measures to 9,999 ft

LAYOUT ACCESSORIES

Product

Part No.

Chalk Line Marker Kit ("Ammo Box")	70502-000
Compact durable box with extra large chalk capacity. Snap line extends up to 165 LF. Comes with 5 lb. of white chalk.	
"Giant" Chalk Reel	70502-001
150 ft. heavy duty cord & ring.	
Replacement string—165 LF	70504-000
5 lb. Chalk Refill Kit (all colors)	70503
25 lb. Chalk Refill Kit (all colors)	70503
Measuring Tape 300'	70110
Lumber Crayons (12 per box)	70511
Sash Chain (500' per reel)	70700-000



Chalk Refill 5 lb & 25 lb Part No. 70503

Inverted Tip Stripping Paint

Fast Drying | VOC compliant

Available colors:

20402-000 Black	20404-000 Blue
20401-000 Yellow	20405-000 Red
20400-000 White	20408-000 Silver

Inverted Tip Marking Paint

Lead Free | High Paint Solids | VOC Available colors:

20502-000 Black	20504-000 Blue
20501-000 Yellow	20505-000 Red
20500-000 White	20508-000 Silver
20507-000 Orange	



Chalk "Ammo Box"
Part No. 70502-000



"Giant" Chalk Reel
Part No. 70502-001



300' Measuring Tape
Part No. 70110-100



Marking Gun	70601-000
Marking Wand	70600-000
Walk-Behind Striper	50101-000

CYCLE LANE SEPARATOR

The Zebra® family of separators are an effective cycle segregation product which is used as a protective barrier to prevent vehicles on the road from invading the cycle lane. Zebra separators are quick and easy to install. Zebra cycle lane separators assists in making any vehicle in contact rebound and deflect back into the road, ensuring the safety of cyclists and pedestrians.



ZEBRA® | ZERO



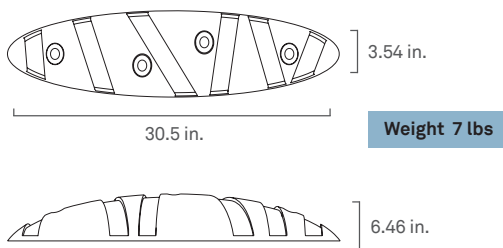
The Zebra® Zero is manufactured from a material developed entirely from postconsumer waste of municipal origin. Available heights: 3.54 in. and 5.11 in.

- 100% Recycled rubber post consumption
- Almost 40% of its surface is retroreflective
- It can be adapted to any kind of road service
- With 4 anchorage points in the road surface
- It is highly resistant to impact

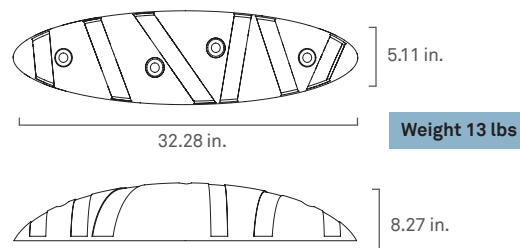


Available stripe colors

ZEBRA® | 9 ZERO



ZEBRA® | 13 ZERO



Flexible delineators are a great addition for extra awareness.

ZEBRA® | PLANTER

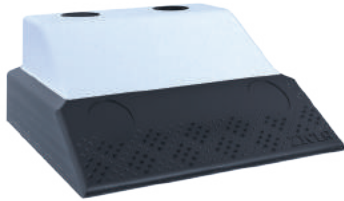
The Zebra® | Planter helps prevent vehicles from straying too close to pedestrians and cyclists. It is made from Linear Low Density Poly Ethylene (LLDPE).

- 100% Recycled plastic
- Almost 40% of its surface is retroreflective
- With retroreflective stripes
- With 4 anchorage points in the road surface
- Water tank of 1.8 gal.
- Stackable



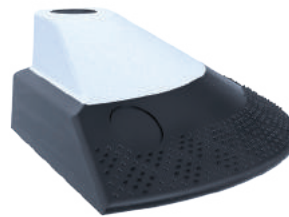
ZIPPER® | ZERO

The Zipper® Zero system makes it possible to transform urban space quickly by building segregated cycle lanes and roundabouts. It protects cyclists and prevents other vehicles on the road from invading the cycle lane. Zipper® Zero can be installed continuously or discontinuously, allowing the construction of multiple configurations. Zipper® Zero modules are manufactured from a material developed entirely from post consumer waste of municipal origin.



ZIPPER® A | ZERO

- Almost 50% of its surface is retroreflective
- It can be adapted to any kind of road service
- With 4 anchorage points in the road surface
- It is highly resistant to impact



ZIPPER® B | ZERO

- Almost 50% of its surface is retroreflective
- It can be adapted to any kind of road service
- With 3 anchorage points in the road surface
- It is highly resistant to impact



Standard stocked color of all products is white, however color customization is available as a custom order. Custom orders take an estimated 60 days. Available colors are yellow, green, red and blue.

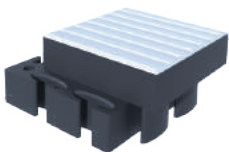
VECTORIAL® MODULAR SYSTEM - *to improve accessibility in the streets*

The Vectorial® system can be built in a fast, simple, and economic way. These semi-permanent modular platforms with multiple configurations get the same result as permanent work, but without compromising use of the road. In addition to improving the accessibility of buses for citizens, the Vectorial® system platform prevents other vehicles from parking in the stop area, decreasing the average time that a bus deploys and loads its extendable ramp.

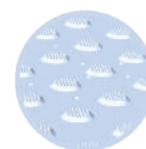
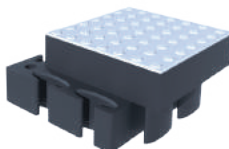
Universal Design Elements



Available surface colors



Tactile Directional Surface

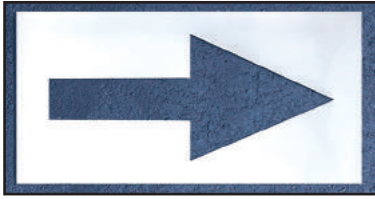


Tactile Warning Surface



pavement marking supplies

STENCILS



- No paint build up – just flex
- Dry paint peels off
- Lighter than wood or aluminum
- Guaranteed against cracking or chipping
- Roll up for ease of transport
- Compact storage

Individual Letters & Numbers

Size	Letter	Part No.	#Part No.
4"	98		99
6"	100		101
8"	101A		101B
10"	102B		102
12"	104		103
18"	104A		104B
24"	106		105
36"	107		107A
48"	108A		108
72"	109		109A
96"	110		110B

Letter & Number Sets

Size	Letter	Part No.	#Part No.
4"	70202-04M		70201-04M
6"	70202-06M		70201-06M
8"	101A-FA		101B-FN
10"	102A-FA		102-FN
12"	70202-12M		70201-12M
18"	104A-FA		104B-FN
24"	106-FA		105-FN
36"	107-FA		107A-FN
48"	108A-FA		108-FN
72"	109-FA		109A-FN
96"	110A-FA		110C-FN

Symbols

Symbols	Part No.
Handicap 33" x 42"	111A
Arrow 6' Straight	113
Arrow 5' Straight	115A
Arrow 5' Curve	115B
R for RR 24" x 60" x 6"	116
R for RR 6' FED Spec	116A
X for RR FED Spec	117A
Arrow 8' FED Curve	118
Arrow 9' 5" FED Straight	119
Combo Arrow 6"	119G
U Turn 120" FDOT	119L-FDOT
Arrow Lane Reduction	119M
Arrow FED Combo Tail	118A
Bike Lane 24" x 48"	125B
Bike Lane 40" x 60"	126
Blank Sheet 50" x 108" 1/8	BS50x108
Arrow 3', 2 piece	993A

12" Legends

12" Legends	Part No.
NO	153
PARKING	154
FIRE	155
LANE	156
ZONE	157
COMPACT	157A
LOADING	157B
STOP	157C
THRU	157D
DRIVE	157E
RESERVED	158
CUSTOMER	158A
VISITOR	159
DO	159A
NOT	159B
ENTER	160
EXIT	161
ONLY	162
NO PARKING 8"	187

18" Legends

18" Legends	Part No.
NO	189
PARKING	190
FIRE	191
ZONE	192
LANE	193
ONLY	194
ONE	195
WAY	196
DO	196A
NOT	196B
DRIVE	197
THRU	198
EXIT	198A
ENTER	198B
STOP	198C
IN	198D
OUT	198E

24" Legends

24" Legends	Part No.
NO	199
PARKING	200
DO	200A
NOT	200B
FIRE	201
LANE	202
ZONE	203
ENTER	204
EXIT	205
DRIVE	206
THRU	207
LOADING	208
ONE	209
WAY	210
STOP	210A
ONLY	210B
SLOW	210C
AHEAD	210D

48" Legends

48" Legends	Part No.
NO	217
LANE	217A
AHEAD	217B
SLOW	218
YIELD	219
STOP	220
EXIT	221
DRIVE	222
DO	223
THRU	224
NOT	225
ONLY	226
ENTER	227A



ADA DETECTABLE WARNINGS



Anchors are included but also may be purchased separately

Composite Surface Panel Detectable Warning System
Tactile warning mats are used to meet ADA requirements when a truncated dome is required for tactile warning. Simple installation with adhesive and anchors. *New concrete inlays are also available.*

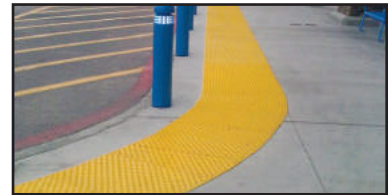
Also available in a Flexible Mat and Steel Tile



Available colors: Brick Red, Colonial Red, Yellow, Black

Available Sizes

2' x 3'	2' x 4'	2' x 5'
3' x 4'	3' x 5'	



Adhesive included

- For use in retrofit applications or new construction
- Large perimeter beveled edges for smooth transition
- Secured with color-matched fasteners and adhesive
- Surface-applied tiles are 1/8" thick with beveled edges

MODULAR LANE SEPARATOR CURB SYSTEM

A median separation system that provides efficient and cost-effective channelization of traffic on freeways, tollways, city streets, and at-grade rail highway crossings. This curb system is an FHWA #WZ-193 accepted passive traffic control device consisting of modular raised curb sections mountable by emergency vehicles and the toughest channelizer posts on the market. The system is designed for use wherever pavement markings are insufficient to provide safe channelization.



- Dramatic picket fence effect increases the visual barrier
- Low-maintenance with super-tough polyurethane posts
- Curb sections & upright posts impact tested at 70 mph
- Optional arc of road studs provides additional reflectivity
- Molded with solid color throughout - no painting required
- Internal radial rib structure supports 10,000 lbs. of loading
- Four scuppers per curb section allow passage of water
- Curb sections install in just minutes with one person
- Design allows for circular or curved installations
- Curbs covered by five-year pro-rated warranty
- Upright posts covered by one-year warranty
- Entire system MUTCD-compliant & NCHRP 350 approved

Other lengths, sizes, and colors of these products are available by special order. Post and fixed base standard colors are white, yellow, and fluorescent orange.



CROSSWALK SIGNS



IN-STREET PEDESTRIAN CROSSWALK SIGN

The In-Street Pedestrian Crosswalk Signs provide enhanced conspicuity at un-signalized intersections to alert motorists to local laws concerning yielding to or stopping for pedestrians in crosswalks.

Base options include one base, fixed base, or quick-release base.

Product	Part No.
YIELD to Ped	30875-YPF
STOP to Ped	30875-SPF

LIGHTWEIGHT, PORTABLE PEDESTRIAN SIGN

Designed for use by school crossing guards who require a pedestrian safety device that is easily transported and deployed. In accordance with the MUTCD to alert motorists to local laws concerning yielding to or stopping for pedestrians in crosswalks.

Product	Part No.
YIELD to Ped	30875-YPP
STOP to Ped	30875-SPP



BASE TYPES



Fixed Base – Part No: 30951-FSMA

Surface mount base designed for permanent applications. This base has the convenience of a permanent base that secures the upright with bolts. Fixed base can be installed using the Impact Recovery System's anchor kit or epoxy.



Quick Release Base – Part No: 30951-SMA

Surface mount base with our unique quick-release feature that provides the ability to change out or remove products in less than five seconds without the use of tools or special equipment. Quick-release base can be installed using the Impact Recovery System's anchor kit or epoxy.



Recessed Base – Part No: 30951-RSMA

Designed to be recessed into the pavement and to be snow-plowable. Uprights may utilize either a quick-release or standard upright installation. The base is constructed of forged steel and is available in high or low profile.



Drivable Post – Part No: 30951-DPP

Soil-mount base designed for offroad soil installations. This base is not interchangeable with standard Impact Recovery Systems' uprights as it requires a special drivable spring assembly. Extension available.

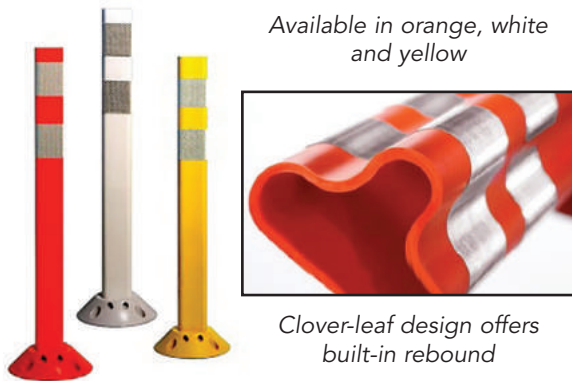


One Base – Part No: 30951-BAS

Portable design and ergonomic carrying handle make it ideal for situations where rapid deployment of temporary signage is needed. One Base is easily transported and perfect for temporary applications. One Base is made of 100% recycled rubber and comes standard with our quick-release feature that allows upright installation and removal in less than five seconds.

FLEXIBLE DELINEATOR POSTS

Surface Mount	Part No.
18" Tubular Marker	30842-18XXX
24" Tubular Marker	30842-24XXX
28" Tubular Marker	30842-28XXX
36" Tubular Marker	30842-36XXX
42" Tubular Marker	30842-42XXX
48" Tubular Marker	30842-48XXX



PEXCO FG DELINEATOR POSTS

The clover-leaf design of the FG 300 Tubular marker delineator post provides far better rebound than simple round tubes. Curving the sides of the tube changes the moment of inertia and builds up tremendous energy, resulting in a quick rebound when impacted.

TYPE 3 CHANNELIZERS/ROUND POSTS

These posts are ideal for any application where high performance and durability are important, including exit lane delineation, changes in road alignment, center line traffic separation, or turn restrictions.



FLAT TOP DELINEATORS

Surface Mount	Part No.
Type 1 & 2 Guide Posts (Flat Top)	
36" Flat Post Marker	30871-XXX
42" Flat Post Marker	30873-XXX
48" Flat Post Marker	30872-XXX
66" Flat Post Marker	30874-XWX



Surface Mount	Part No.
Type 3 Channelizers (Round Post)	
36" Tubular Marker	30871-XXX
42" Tubular Marker	30873-XXX
48" Tubular Marker	30872-XXX
66" Tubular Marker	30874-XXX

Base options include fixed base or quick-release base.

SHUR-FLEX DRIVEABLE DELINEATORS

Sturdy, non-metallic, one component piece that holds up to the rigors of roadway abuse. Standard post colors are white, yellow, orange, green, black, gray, and brown. Additional colors and lengths available.

Driveable Delineator	Part No.
36" Ground Mount Stake	30855-836
48" Ground Mount Stake	30855-848
54" Ground Mount Stake	30855-854
60" Ground Mount Stake	30801-810



SAFE-HIT FLEXIBLE DELINEATOR POSTS

Available in various colors of High Intensity or Diamond Grade Reflective Sheeting



- Withstands multiple vehicle impacts
- Flexes on impact returning to upright position
- Custom decals available
- Standard post colors are white, yellow, & orange
- Additional colors and lengths available

Surface Mount Part No.

Type 1 & 2 Guide Posts (Flat Top)

24" Flat Post	30824-SXX
28" Flat Post	30825-SXX
36" Flat Post	30826-SXX
42" Flat Post	30827-SXX
48" Flat Post	30828-SXX

Type 3 Channelizers (Round Post)

24" Flat Post	30834-SXX
28" Flat Post	30835-SXX
36" Flat Post	30836-SXX
42" Flat Post	30837-SXX
48" Flat Post	30838-SXX
Pin Lock Base	30840-SXX

Soil Mount

Part No.

Type 1 & 2 Guide Posts (Flat Top)

18" Flat Post	30823-GXY
24" Flat Post	30824-GXY
28" Flat Post	30825-GXY
36" Flat Post	30826-GXY
42" Flat Post	30827-GXY
48" Flat Post	30828-GXY

Type 3 Channelizers (Round Post)

18" Round Post	30833-GXY
24" Round Post	30834-GXY
28" Round Post	30835-GXY
36" Round Post	30836-GXY
42" Round Post	30837-GXY
48" Round Post	30838-GXY
14" Soil Anchor	30840-G14
18" Soil Anchor	30840-G18



FLEXSTAKE FLEXIBLE DELINEATOR SOIL MOUNT POSTS



Round Top also
available

Flexible soil-anchored posts provide delineation and enhance motorist safety on public and private roadways. Easily replaced without having to reinstall the existing anchor system. Available in orange, white, and yellow.

Soil Mount (Flat Top)

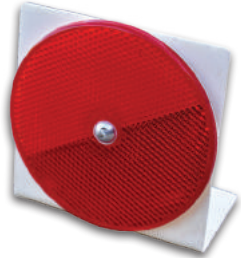
Part No.

18" Soil Mount	30839-18GXX
24" Soil Mount	30839-24GXX
28" Soil Mount	30839-28GXX
36" Soil Mount	30839-36GXX
42" Soil Mount	30839-42GXX
48" Soil Mount	30839-48GXX

BARRIER / GUARD RAIL & TOP MOUNT DELINEATORS



Guardrail	Part No.
1-way white	30801-102
1-way yellow	30801-101
2-way white	30801-104
2-way yellow	30801-103



Top Mount	Part No.
1-way white	30802-001
1-way yellow	30802-002
1-way red	30802-003
2-way white	30802-101
2-way yellow	30802-102
2-way red	30802-103



Barrier wall	Part No.
3 x 12" 1-way yellow	30806-101
3 x 12" 1-way white	30806-102
3 x 12" 2-way yellow	30806-103
3 x 12" 2-way white	30806-104
3 x 16" 1-way yellow	30801-123
3 x 16" 1-way white	30801-121
3 x 16" 2-way yellow	30801-124
3 x 16" 2-way white	30801-122

TYPE I & II BARRICADES



Econocade	Part No.
Type I E.G. - 12" x 24" top panel	30252-EP1
Type I H.I. - 12" x 24" top panel	30252-HP1
Type II E.G. - 12" x 24" top 8" x 24" bottom	30252-EPP2
Type II E.G. - 8" x 24" top & bottom	30252-EP2
Type II H.I. - 8" x 24" top & bottom panels	30252-HP2

Econocade® Type I and II

- Economical, strong, and durable
- Solid wall design: Legs and boards are molded in one piece
- Easy to handle, pack, & transport
- Available in a variety of colors
- Rust-free and impact resistant
- Names can be stenciled on the barricade for identification
- NCHRP-350 accepted, meets MUTCD standards

Plasticade® Type I and II

- Never rusts or needs painting
- Can be internally ballasted with up to 10 lbs. of dry sand
- Molded handles with mounting holes for attaching flashing lights
- Features "click lock" hinges for a positive interlock in the open position
- Sandbag bar if needed
- Stacking lugs keep stacked units from sliding
- Names can be stenciled on the barricade for identification
- NCHRP-350 accepted, meets MUTCD standards



Plasticade

Plasticade	Part No.
Type I E.G. - 12" x 24" top panel	30255-EP1
Type I H.I. - 12" x 24" top panel	30255-HP1
Type II E.G. - 12" x 24" top 8" x 24" bottom	30255-EPP2
Type II E.G. - 8" x 24" top & bottom	30255-EP2
Type II H.I. - 8" x 24" top & bottom panels	30255-HP2

Combocade® Type I and II

- Replaceable components saves money
- Boards can be replaced
- Legs can be replaced or repaired
- Standard 45" steel legs, 14 gauge thickness, galvanized
- Boards will not bend, warp, crack, splinter, or peel
- No drilling – save labor!
- Names can be stenciled on the boards for identification
- NCHRP-350 accepted, meets MUTCD standards



Combocade

Combocade	Part No.
Type I E.G. - 8" x 24" top panel	30251-EP1
Type I H.I. - 8" x 24" top panel	30251-HP1
Type II E.G. - 8" x 24" top & bottom	30251-EP2
Type II H.I. - 8" x 24" top & bottom panels	30251-HP2

Panels may also be customized with custom messages and graphical designs. Diamond grade sheeting and blank panels available.

TYPE III BARRICADES



Plastic Type III Breakaway Barricade

- All plastic construction
- Lies flat for storage and transport
- Available with five board lengths, 1" x 8"
- Boards are available sheeted (one or both sides) or unsheeted
- Attach two flashing lights
- Sold in kits or as component parts
- NCHRP-350 accepted, meets MUTCD Standards

Plastic Type III

Part No.

8" x 6' panel E.G.	30254-E6RL
8" x 6' panel H.I.	30254-H6RL
8" x 8' panel E.G.	30254-E8RL
8" x 8' panel H.I.	30254-H8RL
8" x 10' panel E.G.	30254-E10RL
8" x 10' panel H.I.	30254-H10RL
8" x 12' panel E.G.	30254-E12RL
8" x 12' panel H.I.	30254-H12RL

Rubber Base Type III Barricade

- No sandbags needed
- Volcano rubber base weighs 43.25 lbs.
- Plastic 1" x 8" boards are available in 4', 6', 8', 10', and 12' lengths
- NCHRP-350 Accepted, Meets MUTCD Standards



Rubber Base Type III

Part No.

8" x 6' panel E.G.	30254-ERL6
8" x 6' panel H.I.	30254-HRL6
8" x 8' panel E.G.	30254-ERL8
8" x 8' panel H.I.	30254-HRL8
8" x 10' panel E.G.	30254-ERL10
8" x 10' panel H.I.	30254-HRL10
8" x 12' panel E.G.	30254-ERL12
8" x 12' panel H.I.	30254-HRL12

Telespar (Steel Leg) Type III Breakaway Barricade

- Galvanized for superior corrosion protection
- Universal mounting holes, pre-punched 7/16"
- Square shape provides superior wind load capabilities
- Quick removal of uprights from feet
- Plastic 1" x 8" boards are available in 4', 6', 8', 10', and 12' lengths
- Uprights are 63" tall
- Accepts two flashing lights
- Sold in kits or as component parts
- NCHRP-350 accepted, meets MUTCD standards

Telespar Type III

Part No.

8" x 6' panel E.G.	30253-E6RL
8" x 6' panel H.I.	30253-H6RL
8" x 8' panel E.G.	30253-ERL
8" x 8' panel H.I.	30253-HRL
8" x 10' panel E.G.	30253-E10RL
8" x 10' panel H.I.	30253-H10RL
8" x 12' panel E.G.	30253-E12RL
8" x 12' panel H.I.	30253-H12RL



Additional configurations, diamond grade sheeting, and blank panels available. Please contact us for any options not shown.

A-FRAME CROWD CONTROL BARRICADES



- For crowd control and road closures, easy to set up, transport, and store
- Use with one I-beam board or two, flashing light receptacle on each leg
- Legs can be ballasted with sand, available in three lengths (6', 8', 10')
- Legs available in a variety of colors

A-Frame

Part No.

8" x 6' panel E.G.	30250-6EG
8" x 6' panel H.I.	30250-6HI
8" x 8' panel E.G.	30250-8EG
8" x 8' panel H.I.	30250-8HI
8" x 10' panel E.G.	30250-8EG
8" x 10' panel H.I.	30250-10HI

TRAFFIC BARRELS

- Thick wall design makes this barrel extremely sturdy and durable
- Features molded-in handles with holes for mounting a light
- Secure with a tire ring or rubber base
- NCHRP certified and meets MUTCD standards



Traffic Barrels	Part No.
Barrel with no sheeting	30222-000
4-4" Engineer Grade sheeting	30222-001
4-4" High Intensity sheeting	30222-100
4-4" Diamond Grade sheeting	30222-101
24 lb Tire ring	30223-000
25 lb Snap on Rubber Base	30223-001

GRABBER CONES

Grabber Cones	Part No.
16 lb base Grabber	30273-001
30 lb base Grabber	30271-001



TRAFFIC CONES

Traffic Cones	Part No.
Cone 18" non-reflective	30100-NW3
Cone 18" 6" ref. collar	30100-LW3
Cone 28" 7 lb non-reflective	30100-NW7
Cone 28" 7 lb 4" & 6" ref. collar	30101-257
Cone 28" 7 lb 6" ref. collar	30101-175
Cone 28" 10 lb non-reflective	30101-NS0
Cone 28" 10 lb 4" & 6" ref. collar	30101-2S0
Cone 36" 12 lb non-reflective	30102-NS0
Cone 36" 12 lb 4" & 6" ref. collar	30102-250

STOP/SLOW PADDLES

An absolute essential for workzone safety, especially on two-lane roads. Also ideal for school crossing guards and flaggers.

Paddles	Part No.
Handheld Stop/Slow/Go Paddles	30160-HHP
Aluminum 18" non-reflective w/short handle	30160-N18
Plastic 24" non-reflective w/72" handle assy.	30160-PN24
Plastic 24" reflective w/72" handle assy.	30160-PR24

VERTICAL PANEL CHANNELIZER

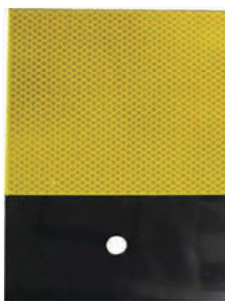
- Available in 20-lb or 30-lb base
- Meets MUTCD minimum requirements of 270 square inches of reflective sheeting
- Meets NCHRP-350
- Large arch carry handle allows gloved workers easy, comfortable and secure grip
- Available in Left and Right stripes



PANEL-LITE

Part No. 30205-000

Warning lights have long been subject to theft or destruction. Therefore, many of our customers opt instead for Panel-Lite, a reflective plastic panel that mounts in the same place as a warning light on a drum or channelizers.



Panel-Lite Features:

- Approved in New Mexico and Texas as a warning light substitute
- Made from durable, flexible high density polyethylene plastic
- 5 1/4" high x 6" wide sheeting area
- Sheeting meets all state and federal specifications
- Available in Hi-Intensity and Fluorescent Grades
- Panel-Lite accepts sheeting on one or both sides.

BARRICADE LIGHTS



Six-Volt & D-Cell Barricade Lights

Part No. 30200-000

- Six-volt or D-cell battery models
- Double-sided hi-impact amber polycarbonate lens with 90° rotation
- Photo-cell turns light on at night and off during the day



Solar Powered Type B Light (High Intensity)

Part No. 30202-000 - Specify Color

- Flash rate: 60 times/minute
- Power: 1.5 watt solar panel
- Illumination: Nine high-intensity super bright LEDs
- Six hour sun charge: Operates light for 14 days
- On/off switch: Operates 24/7
- Colors available: Amber/Yellow/Red/Blue/White



Solar Powered Type A & C Hazard Light (Dual Function)

Part No. 30200-003 - Specify Color

- Flash rate: 60 times/minute
- Power: 0.4 watt solar panel
- Illumination: Two high-intensity super bright LEDs
- Six hour Sun Charge: Operates 120 hours (Flash mode)
- Six hour Sun Charge: Operates 72 hours (Steady mode)
- On/off switch: Automatic on at dusk; off at dawn
- Colors available: Amber/Yellow/Red/Blue/White

SOLAR ARROW BOARD

Innovative engineering and a unique power system that uses small, eco-friendly batteries. The result is a remarkable technology that benefits the environment without sacrificing performance.

Part No: 30402-000

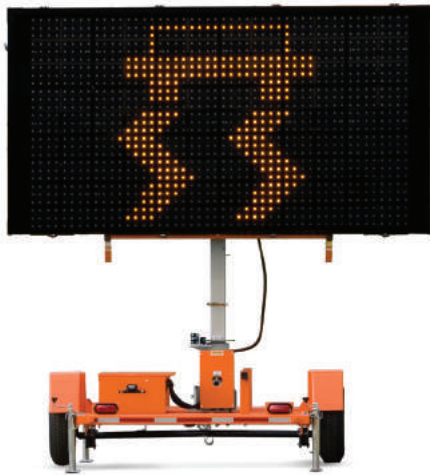
- High-output amber LEDs legible up to one mile (1.6 km)
- Choose 15 lamps with seven arrow display modes or 25 lamps with 12 arrow display modes
- Controller located safely away from traffic
- Positive-drive voltage system applies power to lamps only when lit
- Power system includes resetting dual circuit breakers, reverse polarity protection, and low-voltage disconnect
- 50 watt solar charging system features solid state voltage regulator with charge indicator
- Arrow display has automatic and manual dimming with flash rates of 30 to 40 per minute
- Lunette ring tow hitch for pintle hook
- Meets MUTCD requirements
- NTPEP tested



3 LINE MESSAGE BOARD

Part No: 30407-000

The Three-Line Message Sign is capable of displaying three rows of alphanumeric characters. When you need to get information to the public, the Three-Line's highly legible, ultra-bright LEDs display your message clearly. Unsurpassed quality, engineering, and value, paired with a multitude of functions and options, perfect for a wide variety of applications.



FULL MATRIX MESSAGE BOARD

Part No: 30407-200

Full-size, full-matrix Variable Message Signs are the ideal choice when you need to get information to the public. The full matrix allows the greatest flexibility for displaying any type of message large or small letters, graphics, and symbols. Perfect for a wide variety of applications, a multitude of functions and options make these signs extremely versatile.

HIGHLIGHTER LED MINI LIGHTBAR

Part No. 30452-MXA

Sleek, low-profile LED lightbar provides 360 degrees of continuous light output.

Measuring a mere 2.7 inches high (permanent mount), the stealthy HighLighter LED mini-lightbar features Solaris™ LED reflector technology to redirect light for substantially improved off-axis warning. Reflectors provide 360 degrees of continuous light output while virtually eliminating dark spots.



MICROPULSE ULTRA WARNING LIGHT



Part No. 30430-PEA

The MicroPulse™ Ultra model has a low-profile design that offers a wider range of mounting options to fit various applications. The advanced high-output LED lighthouse can be programmed to operate as a single unit or in synchronization with multiple MicroPulse lighthouses. Built-in flash patterns enable multiple vehicle perimeter lights to be either synchronized in the same pattern or in opposite sequence.

LEGEND LPXH TOW DISCRETE



Part No. 30460-LFXH

Low-cost solution for your tow and recovery needs. The Legend LPXH Tow Discrete lightbar has a traditional nine conductor cable and is an all-LED lightbar with S/T/T (Stop/Turn/Tail) and work lights. This unique lightbar operates as a flashing 12-head that can override to a 10-head with (two) LED work lights to meet all your work zone safety needs.

SOLAR POWERED RADAR SIGN

Radar speed signs are traffic calming devices designed to slow speeders down by alerting them of their speed. Pole-mounted speed signs are often deployed in school zones, neighborhoods and high-accident areas, locations where obeying the speed limit is critical. Available in 13" and 17" display. Most models also available in AC Power.

Radar Sign 13"

TC600S – Part No: 30404-800

- High Intensity amber LEDs
- Display speed and word message alerts alternately or individually, based on speed settings; optional red/blue strobe for alert
- 13" Full Matrix LED display
- Approach-only K-band radar measures speeds from 5 to 150 mph, at a distance of up to 1200 feet
- Radar unit is FCC approved, 100% MUTCD compliant, ISO 9001:2015 Certifiable Quality System
- Low battery cut-off provides battery management
- Wi-Fi enabled: Allows for operation/data download from most web enabled devices management



Radar Sign 17"

TC1000S – Part No: 30404-700

- High Intensity amber LEDs
- Operates up to 2 weeks on fully charged backup batteries
- Flashing speed and SLOW DOWN message
- Wi-Fi enabled: Allows for operation/data download from most web enabled devices management



Ask us about – Safety in a box bundle
Several models available

HYPER-ALERTS™



Hyper-Alerts™ are compact clusters of LED lights built into the YOUR SPEED faceplate of the TC600 model, delivering a significantly more compact solution than traditional beacons.

- The LED clusters deliver the same luminescence as a 12" beacon, only in a more compact surface. This results in an "impossible to ignore alert" even 1000 feet from the sign
- Instead of having to choose between flashing beacons or a radar speed sign, now you can have both alerts for slightly more than the price of either one
- Perfect for use in pedestrian-heavy environments

Portable Radar Sign

TC400 – Part No: 30404-012

- Portable radar speed sign housing weighs only 26 lbs. without batteries
- Field exchange of batteries allows for multi-month usage
- Easily transportable; fits in any vehicle trunk
- Installs in minutes with multiple mounting brackets in place; no tools required, to move sign from bracket to bracket



RT1 RADAR SPEED TRAILER

This system is ideal for - Accident prone areas, Problem areas, Construction zones, School zones and special event speed adjustments.

Part No. 30406-000

- MUTCD compliant colors and faceplate
- 17" full matrix display is bright and crystal clear to address the widest range of speeds
- Up to two weeks operation on a fully charged system
- Increased range of effectiveness with 1,200' vehicle detection
- Bluetooth wireless capable allows adjustment and extraction of relevant information safely from inside your vehicle. Traffic volume counts, speed counts, timing, and more, available via Bluetooth
- Incredibly effective at speeds 20 to 75MPH
- Trailer dimensions: 53" x 68" x 71"
- Overall weight: 490 lbs.



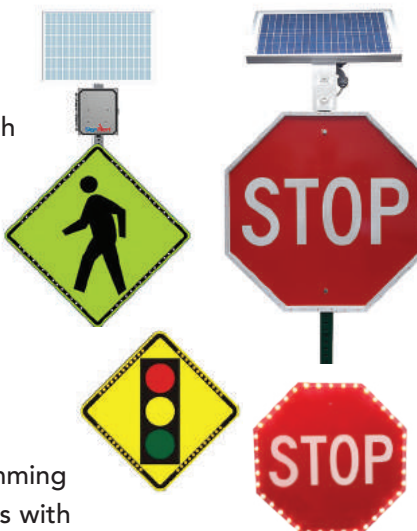
FLASHING TRAFFIC SIGNS

A perfect solution to retrofit existing signs with additional levels of warning for those situations that demand them. LED flashers face mount on existing signs with permanent bonding tape and/or mechanical fasteners.

Advanced System – Radar Activated

Part No: 30410-202

- Radar detected approach to activate flash sequence
- Flash will remain ON based on programmed time limit
- Six Level – Auto dimming at night
- AC or 20W solar panel options
- High intensity LED's visible day or night (up to 2 miles at night)
- NEMA four enclosure
- Hassle-free installation and easy programming
- LED flashers face mount on existing signs with permanent bonding tape or mechanical fasteners
- Available Options - Traffic Data Collection, Bluetooth, Modem, Mesh-net communications



Flasher enclosure available in: 6", 12", 18", 24", 30", 36", and 42"

Basic System – 24/7

Part No: 30410-201

- Field retrofits onto almost any existing sign
- Six Level – Auto dimming at night
- 20W solar panel w/10Ah lithium battery
- High intensity LEDs visible day or night (up to two miles at night)
- Hassle-free installation
- LED flashers face mount on existing signs with permanent bonding tape or mechanical fasteners

LED Colors available in:
Red, Amber, or White

POST DRIVERS

Cobra PROe and TTe Post Driver

Huge power, less noise with low vibration. Gas-powered handheld drivers are available with two tool shank sizes and high power-to-weight ratios.

- Easy to start, decompression valves and electronic ignition
- Lightweight – 53 lbs. and easy to carry
- 2.7 HP - one Cylinder – two stroke
- Available in three different shank sizes:
1" x 4 1/4", 1 1/8" x 6", and 1 1/4" x 6"



Cobra Combi Post Driver

King of multi-purpose. When you combine high impact rate and lower impact energy with rotation, you get a very powerful drill.

- Electronic ignition starts in any weather
- Light weight – 55 lbs. easy to carry
- 2.7 HP – 1 Cylinder – two stroke
- Includes one steel drill, chisel, fuel can, and a service bag with cleaning and service tools
- Shank size – 7/8" x 4 1/4" *Cobra PROi model also available*



MAILBOX ASSEMBLY



SHUR-TITE Single Mailbox Support

Part No. 30855-320

- FHWA and NCHRP 350 approved
- Easy installation/quick replacement
- Bright white finish stands out, resulting in less hits
- Choice of steel post or recycled rubber post
- Composed of a recycled HDTP/tire rubber composite with a co-extruded HDTP white shell coating. The OD of the post is 2.375" with a wall thickness of .0450 to .0475"



MAILBOX ASSEMBLY

SHUR-TITE Multiple Mailbox Support

Part No. 30855-330

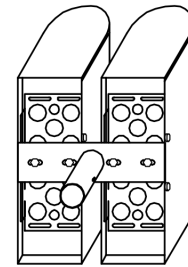
- FHWA and NCHRP 350 approved
- Galvanized and white powder-coated finish presents double corrosion protection, assuring longer field life
- The ears welded onto our ground support leg rest on the top of our socket, automatically giving field personnel their required 42" dimension to the bottom of the mailboxes
- The pre-drilled upright stems easily accept the SHUR-TITE mailbox brackets (sold separately), assuring mailboxes stay level and straight



SHUR-TITE Double Mailbox Adapter

Part No. 30855-120

- Formed from strong 14 GA sheet metal
- 4 equal slots for installation
- 15" length X 4" wide



Double mailbox adapter



SHUR-TITE Socket & Wedge

Part No. 30980-SW1

- FHWA and NCHRP 350 approved
- Approved for use in three different applications - support for small signs, mailboxes and delineators
- Corrosion free
- Manufactured from recycled plastics

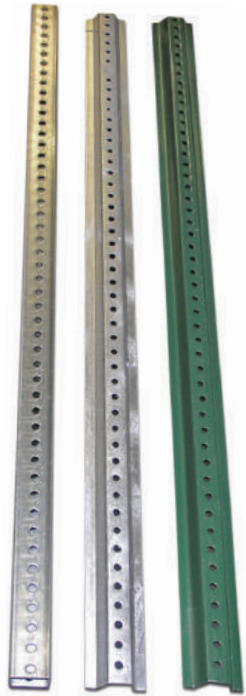


SHUR-TITE Single Mailbox Bracket

Part No. 30855-100

- Patented design for 2-3/8 outside diameter posts
- FHWA and NCHRP 350 Approved
- Formed from strong 14 GA A36 steel and then powder-coated black

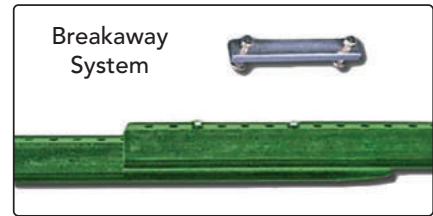
SIGN POSTS



U-channel

U-channel	Part No.
6' Galv. U-channel 1.12 lb	30900-106
7' Galv. U-channel 1.12 lb	30900-107
7' Galv. U-channel 2 lb	30900-117
8' Galv. U-channel 2 lb	30900-118
10' Galv. U-channel 2 lb	30900-110
11' Galv. U-channel 2 lb	30900-111
12' Galv. U-channel 2 lb	30900-112
6' Green U-channel 1.12 lb	30900-006
7' Green U-channel 1.12 lb	30900-007
7' Green U-channel 2 lb	30900-017
8' Green U-channel 2 lb	30900-008
10' Green U-channel 2 lb	30900-010
11' Green U-channel 2 lb	30900-011
12' Green U-channel 2 lb	30900-012
14' Green U-channel 2 lb	30900-014

3 lb. and 4 lb. U-channel available by special order.



U-Channel Breakaway System

Part No. 30900-003K

- Easy to install
- Ground mounted, bolted base breakaway system
- Installs in minutes with just two special bolts and spacers used to join the base to the top post
- FHWA approved
- Meets AASHTO guidelines

Square Post Breakaway System

- Versatile four-sided sign mounting
- Fast, economical replacement of damaged sign posts using original anchor assembly
- FHWA approved, meets AASHT specifications & NCHRP 350 approved
- Can be used in breakaway or single post installation



Square Posts

Part No.

10' X 1 3/4" Galv. square post 14g	30941-110
11' X 1 3/4" Galv. square post 14g	30941-111
12' x 1 3/4" Galv. square post 14g	30941-112
14'x 1 3/4" Galv. square post 14g	30941-114
16'x 1 3/4" Galv. square post 14g	30941-116
10'x 2" Galv. square post 14g	30942-110
12'x 2" Galv. square post 14g	30942-112
10' X 1 3/4" Galv. square post 12g	30941-010
12' X 1 3/4" Galv. square post 12g	30941-012
10' X 2" Galv. square post 12g	30942-010
12' X 2" Galv. square post 12g	30942-012

Anchors/Sleeves

Part No.

3' x 2" Galv. square 12g	30942-003
1 1/2' x 2 1/4" Galv. square 12g	30943-001
3' x 2 1/4" Galv. square 12g	30943-003
1 1/2' x 2 1/2" Galv. square 12g	30944-001

Aluminum Sign Posts

(available in Florida only)



Aluminum Post

Part No.

2" x 12' 1/8" Aluminum post round	30947-XXX
2.5" x 12.5' 1/8" Aluminum post round	30947-XXX
2.5" x 15' 1/8" Aluminum post round	30947-XXX
3" x 13.5' 1/8" Aluminum post round	30947-XXX
3" x 15' 1/8" Aluminum post round	30947-XXX
3" x 17' 1/8" Aluminum post round	30947-XXX
3" x 20' 1/8" Aluminum post round	30947-XXX
3.5" x 15' 3/16" Aluminum post round	30947-XXX
3.5" x 20' 3/16" Aluminum post round	30947-XXX

SIGN POSTS



Round galvanized steel sign posts come standard 2 3/8" outer diameter and 6', 8' 10', 11' or 12' lengths. Many options are available for sign mounting, surface flanges, and post top closure caps. Galvanized coating provides corrosion resistance

Heavy Round SCH 10

Part No.

10' x 2 7/8" Galv. tube	30981-210
12' x 2 7/8" Galv. tube	30981-212
14' x 2 7/8" Galv. tube	30981-214
16' x 2 7/8" Galv. tube	30981-216

Round Posts

Part No.

6' x 2 3/8" Galv. tube	30911-006
8' x 2 3/8" Galv. tube	30911-008
10' x 2 3/8" Galv. tube	30911-010
11' x 2 3/8" Galv. tube	30911-011
12' x 2 3/8" Galv. tube	30911-012

Heavy Round SCH 80

Part No.

10' x 2 7/8" Galv. tube	30981-110
12' x 2 7/8" Galv. tube	30981-112
14' x 2 7/8" Galv. tube	30981-114
16' x 2 7/8" Galv. tube	30981-116

SIGN POST PULLER

Sign post pulling made easy! The powerful, patented jaw and lever mechanism allows you to pull posts straight out of the ground or asphalt without bending the post or breaking your back. Tilted post or uneven ground? No problem - just lean the JackJaw® to align with the post. Increase efficiency and reduce costs while saving man-house and preventing back injuries.



JackJaw® JJ0315 Sign Post Puller

Part No. 30999-304

- Grip width - 1 3/4" to 2 1/4"
- Lever arm - 16 to 1
- Weight 21 lbs. Lever
- Made from heavy duty steal for strength
- Hardened gripper jaws for long wear and no slip operation
- Plated with Zinc and Clear Chromate for corrosion resistance
- Lever arm converts operator weight to upward pull with no back strain
- Used for pulling square sign posts.



JackJaw® JJ0330 Sign Post Puller

Part No. 30990-308

- Grip width - 1/8" to 3/4"
- Lever arm - 16 to 1
- Weight 21 lbs. Lever
- Made from heavy duty steal for strength
- Hardened gripper jaws for long wear and no slip operation
- Plated with Zinc and Clear Chromate for corrosion resistance
- Lever arm converts operator weight to upward pull with no back strain
- Used for pulling U-channel posts or ground rods

SIGN MOUNTING HARDWARE



Steel Totes Banding Material
5/8" Part No. 30622-010
3/4" Part No. 30622-020



Multi Tool
Band, crimp & fasten
Part No. 30620-001



Buckles
5/8" Part No. 30621-030
3/4" Part No. 30621-020
Sold by box of 100



Band-It Material
1/2" Part No. 30622-030



Friction Cap Round Post
Post Closure Cap 2 3/8" Rnd
Part No. 30981-700
Post Closure Cap 3" Rnd
Part No. 30981-701



Pyramid Cap Square Post
For 2" Square Posts
Part No. 30672-000



Rain Cap Round Post
For 2 3/8" Round Posts
Part No. 30671-100



Square Post Sign Cap
1 3/4" Part No. 30631
2" Part No. 30632
5 1/2" Part No. 30631
12" Part No. 30631
Flat or Extruded



Adjustable U-Channel Post Cap
5 1/2" Part No. 30634
12" Part No. 30634
Flat or Extruded



U-Channel 180 Degree Post Cap
5 1/2" Part No. 30634
12" Part No. 30634
18" Part No. 30634
24" Part No. 30634
Flat or Extruded



Round Post Sign Cap
2 3/8" Part No. 30630
3" Part No. 30633
5 1/2" Part No. 30630
12" Part No. 30630
Flat or Extruded



Cross Blade Holder
5 1/2" Part No. 30630
12" Part No. 30630
Flat or Extruded



U-Channel Blade Holder
Part No. 30634
Flat or Extruded



5 1/2" Adjustable Cross Piece
Part No. 30630
Flat or Extruded



Cross Piece 90 Degree
5 1/2" Part No. 30630
12" Part No. 30630
18" Part No. 30630
24" Part No. 30630
Flat or Extruded



Round Post Flange Mount
For 2 3/8" Round Posts
Part No. 30670-000K



Square Surface Mount
Part No. 30670-200K
For 2" Posts
2 Corner Bolts included



Triangle Surface Mount
For Posts
Part No. 30981-540K



Square Sign Post Base
Part No. 30670-000K



Triangle Slip Base
Bolt Keeper Plate
Part No. 30981-720



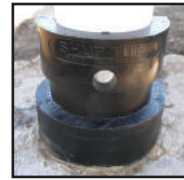
U-Channel Base
16" Part No. CLW-30980-210
20" Part No. CLW-30980-220



Bolt Clamp Collar Assembly
Part No. 30981-531
For 2 7/8" Round Posts
Slip base & 3 Bolts included



Collar Assembly
For 2 7/8" Round Posts
Part No. 30981-530



Shur-Tite Socket/Wedge
Signs Up to 10 Sq. Ft.
Part No. 30980-SW1



Bolt Clamp for Overhead Sign
Part No. 30605-000



Ground Socket TY-A Driveable
Part No. 30981-510



Wedge-TY A Driveable
Part No. 30981-511



Ground Triangle Stub
Part No. 30981-520



8" Traffic Sign Z-Bar
Part No. 30690-Z08
Other sizes available



Sign Rivets
Part No. 30640-010



Square Post 2.5" Corner Bolt
For 2" Square Break-away
Part No. 30642-010



Double Post Clamps
For 2 3/8" Round Posts
Part No. 30604-100



Single Post Clamps
For 2 3/8" Round Posts
Part No. 30604-000



Tuf Nut
3/8"
Part No. 30645-010



Hardware Nut & Bolt Sets
Two nuts & bolts, and two plastic washers
5/16" x 2 1/4" set Part No. 30691-013 (Sign to U-channel post)
5/16" x 2 1/2" set Part No. 30691-014 (Sign to square post)
3/8" x 1" set Part No. 30691-010 (FDOT sign to z-bar)



Back to Back Clamps
2 3/8" Part No. 30602-100
2 7/8" Part No. 30606-100



Bolt Set Bracket
1/2" x 4"
Part No. 30981-721



Flared Bracket
Part No. 30623-010



U-Sign Support
For 2 7/8" Post
Part No. 30981-610

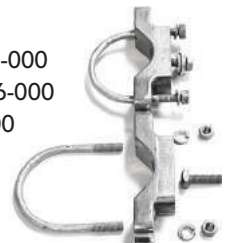


Galvanized Sign Post U-Bolt
2 3/8" Part No. 30691-001
2 1/2" Part No. 30691-012



T-Sign Support
Part No. 30981-600

U-Bolt Set
2 3/8" Part No. 30602-000
2 7/8" Part No. 30606-000
3" Part No. 30603-000



ROLL-UP SIGNS AND STANDS

SZ-412-2 Single Spring Stand

Part No. 30990-202

- Easy storage
- Dual coil spring design
- Both pull-pin and kick release of legs
- Three separate height adjustments
- Weight 37 lbs.
- Approved for roll up signs or rigid signs up to 48" x 60"



Universal
bracket
included

SZ-412-2S Dual Spring Stand

Part No. 30990-553

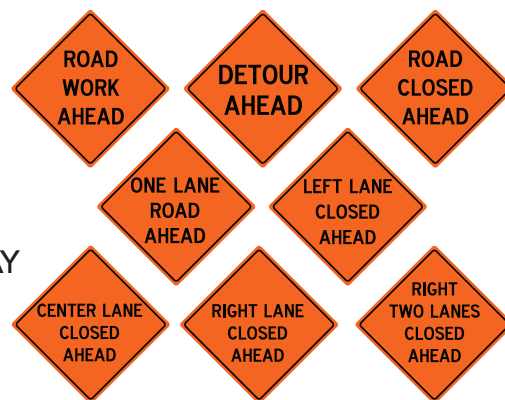
- Easy storage
- Dual coil spring design
- Both pull-pin and kick release of legs
- Three separate height adjustments
- Weight 37 lbs.
- Approved for roll up signs or rigid signs up to 48" x 60"



STANDARD LEGENDS FOR CONSTRUCTION SIGNS

Standard sizes 36" x 36" & 48" x 48"

- | | |
|-----------------------|---------------------------|
| • BE PREPARED TO STOP | • MERGE RIGHT SYMBOL |
| • DETOUR AHEAD | • MERGE LEFT SYMBOL |
| • FLAGGER AHEAD | • RIGHT LANE CLOSED |
| • FLAGGER SYMBOL | • LEFT LANE CLOSED |
| • CONSTRUCTION AHEAD | • TRUCKS ENTERING HIGHWAY |
| • ROAD WORK AHEAD | • SURVEY CREW AHEAD |
| • MEN WORKING | • UTILITY WORK AHEAD |
| • MEN WORKING SYMBOL | • WORK AREA AHEAD |
| • MOWING AHEAD | • RIGHT LANE CLOSED AHEAD |
| • ONE LANE ROAD AHEAD | • LEFT LANE CLOSED AHEAD |



Custom legends are available.

Signs and Stands

Part No.

36" Reflec. Std. Legends	31XXX-R36
36" Overlay	312XX-000
36" Ribs	80330-B36
48" Reflec. Sign	31XXX-R48
48" Overlay	311XX-X00

Signs and Stands

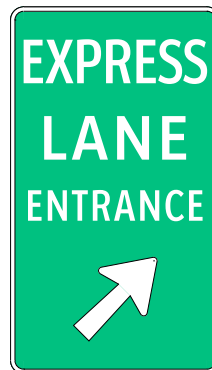
Part No.

48" Ribs	80330-B48
Tri-Pod Sign Stand	30950-203
"T" Stand	30990-204
Sign Stand Single Spring	30990-202
Sign Stand Dual Spring	30990-553

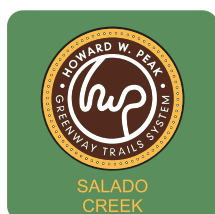
STREET TOPPERS AND MARKERS



HIGHWAY AND OVERHEAD GUIDE SIGNS



CUSTOM SIGNS



ARCHITECTURAL SIGNS



REGULATORY SIGNS



R7-8
12" x 18"



R7-8VA
12" x 18"



R7-8D
12" x 18"



R7-8FL
12" x 18"



R7-8GA
12" x 18"



R7-8PB
12" x 6"



CLW-
90RP1218ARSHIP
12" x 18"



CLW-
90RP1224PHXHIP-A
12" x 24"



CLW-
90RP1218TUCHIP
12" x 18"



R1-1
24", 30", 36"



R1-2
30", 36"



R1-3
12" x 6"



R1-5AL
18" x 24", 24" x 30"



R1-5L
18", 24", 30", 36"



R1-6
12" x 36"



R2-1
18" x 24", 24" x 30"
36" x 48", 48" x 60"



R2-5A
24" x 30", 36" x 48"
48" x 60"



R3-2, R3-1
24", 30", 36"



R3-4
24", 30", 36"



R3-5A
30" x 36"

Sheeting available in Engineer Grade(EG), High Intensity(HI), and Diamond Grade(DG).
MUTCD Sign Poster available with an extensive list of traffic signs.



R3-5L
18" x 24", 24" x 30"
30" x 36"



R3-7L
24", 30", 36"



R3-17
30" x 24"



R3-18
24", 30", 36"



R4-7A
24" x 30", 36" x 48"
48" x 60"



R4-7
24" x 30", 36" x 48"
48" x 60"



R5-1
24", 30", 36"



R5-1A
30" x 18", 36" x 24"
42" x 30"



R5-2
24", 30", 36"



R5-6
24", 30", 36"



R6-1L
36" x 12", 54" x 18"



R6-2R
24" x 30", 36" x 48"
48" x 60"



R6-3
24" x 18", 30" x 24"
36" x 30"



R7-1
12" x 18", 18" x 24"
24" x 30"



R7-2A
12" x 18", 18" x 24"
24" x 30"



R8-3A
24", 30", 36"



R8-3
2" x 18", 18" x 24"
24" x 30"



R9-38
24", 30", 36"



CLW-
90FL1218AZHIP
12" x 18"



CLW-
90FL1218PHXHIP
12" x 18"

Sheeting available in Engineer Grade(EG), High Intensity(HI), and Diamond Grade(DG).
MUTCD Sign Poster available with an extensive list of traffic signs.

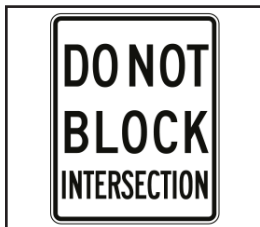
REGULATORY SIGNS



CLW-
90FL1218TUCHIP
12" x 18"



R10-6A
24" x 30", 36" x 48"
48" x 60"



R10-7
24" x 30", 36" x 48"
48" x 60"



R10-11
24" x 30"



R10-12
24" x 30"



R11-2
48" x 30"



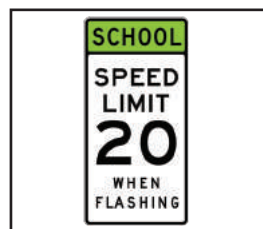
R12-5
24" x 30", 36" x 48"
48" x 60"



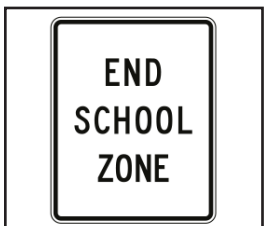
S1-1
24", 30", 36"



S3-1
24", 30", 36"



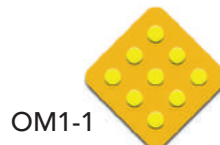
S5-1
24" x 48"



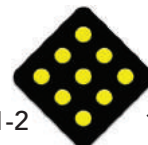
S5-2
24" x 30", 36" x 48"
48" x 60"

OBJECT MARKERS

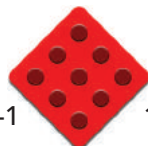
Mark obstructions or hazards adjacent to your road with our easy to see object markers and chevron signs. Each sign comes with two holes for easy mounting on a post or fence.



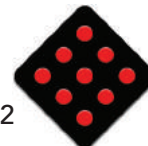
OM1-1 18"x18"



OM1-2 18"x18"



OM4-1 18"x18"



OM4-2 18"x18"



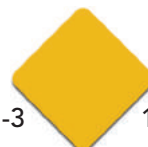
OM-3R
12"x36"



OM-3L
12"x36"



OM-3C
12"x36"



OM1-3 18"x18"



OM1-4 18"x18"



OM-6W
4"x8"
6"x12"



OM-6G
4"x8"
6"x12"



OM-6Y
4"x8"
6"x12"

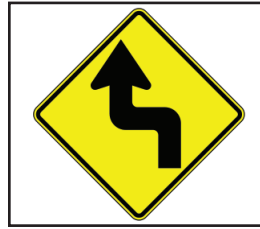
WARNING SIGNS



W1-1L
24", 30", 36", 48"



W1-2L
24", 30", 36", 48"



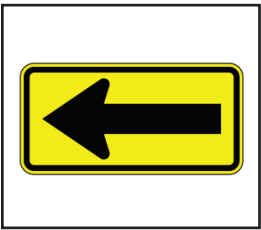
W1-3L
24", 30", 36", 48"



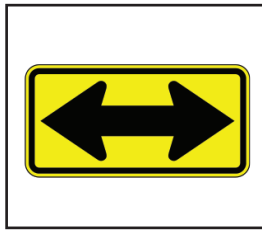
W1-4L
24", 30", 36", 48"



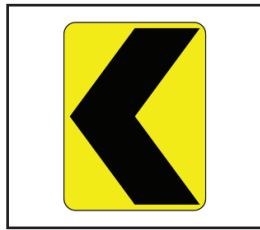
W1-5L
24", 30", 36", 48"



W1-6L
24" x 12", 36" x 18"
48" x 24"



W1-7L
24" x 12", 36" x 18"
48" x 24"



W1-8L
18" x 24", 24" x 30"



W1-10L
24", 30", 36", 48"



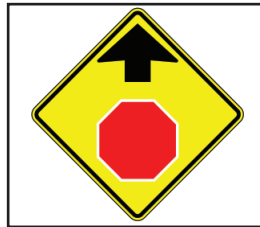
W2-1
24", 30", 36", 48"



W2-2L
24", 30", 36", 48"



W2-6
24", 30", 36", 48"



W3-1A
24", 30", 36", 48"



W3-1
24", 30", 36", 48"



W3-2A
24", 30", 36", 48"



W3-2
24", 30", 36", 48"



W3-3
24", 30", 36", 48"



W4-2R
24", 30", 36", 48"



W4-3R
24", 30", 36", 48"



W5-2A
24", 30", 36", 48"

Sheeting available in Engineer Grade(EG), High Intensity(HI), and Diamond Grade(DG).
MUTCD Sign Poster available with an extensive list of traffic signs.

WARNING SIGNS



W5-2
24", 30", 36", 48"



W6-1
24", 30", 36", 48"



W6-2
24", 30", 36", 48"



W6-3
24", 30", 36", 48"



W7-1
24", 30", 36", 48"



W7-5
24", 30", 36", 48"



W8-1
24", 30", 36", 48"



W8-3
24", 30", 36", 48"



W8-5
24", 30", 36", 48"



W8-10
24", 30", 36", 48"



W9-1L
24", 30", 36", 48"



W10-1
24", 30", 36", 48"



W11-2
24", 30", 36", 48"



W11-3
24", 30", 36", 48"



W11-4
24", 30", 36", 48"



W11-5
24", 30", 36", 48"



W11-7
24", 30", 36", 48"



W11-8
24", 30", 36", 48"



W11-9
24", 30", 36", 48"



W11-11
24", 30", 36", 48"

Sheeting available in Engineer Grade(EG), High Intensity(HI), and Diamond Grade(DG).
MUTCD Sign Poster available with an extensive list of traffic signs.

WARNING SIGNS



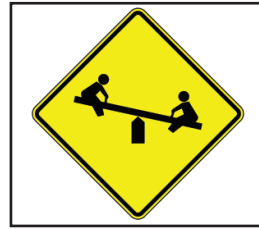
W13-1
18", 24", 30"



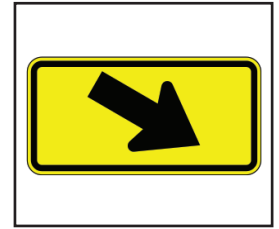
W14-1
24", 30", 36", 48"



W14-2
24", 30", 36", 48"



W15-1
24", 30", 36", 48"



W16-7R
24" X 12", 30" X 18"



W20-7A
24", 30", 36", 48"



W21-1A
24", 30", 36", 48"

Sheeting available in Engineer Grade(EG), High Intensity(HI), and Diamond Grade(DG). MUTCD Sign Poster available with an extensive list of traffic signs.

STREET NAME SIGNS

Standard street name signs may be made with Engineer Grade, High Intensity, or Diamond Grade sheeting. Blades come in lengths up to 144 inches and widths of 6 inches, 9 inches, and 18 inches. Colors available for background and copy are white, blue, green, red, and brown. If you have special needs, please contact us – we can create unique custom street name sign assemblies.



VINYL GRAPHICS, FLEET GRAPHICS, VEHICLE WRAPS, & DESIGN

We specialize in vehicle wraps, fleet graphics, wall murals, design, and more. Our award-winning graphics department will provide you with the perfect solution from concept to design to installation of your project. We stock a full line of premium vinyl films and reflective sheeting. High-resolution, full-color custom vinyls are available using the latest printing technology.

GRAPHIC DESIGN AND INSTALLATION

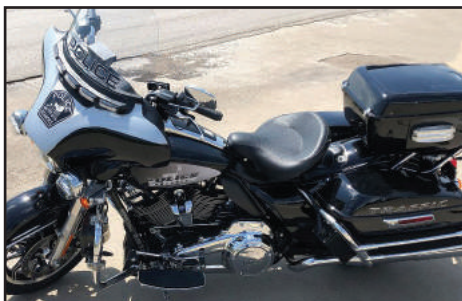


OUR CLIMATE
CONTROLLED
BAYS IN
GRAND PRAIRIE, TX.
ALLOW FOR
YEAR-ROUND
INSTALLATION

FLEET GRAPHICS



FLEET GRAPHICS, VEHICLE WRAPS, DESIGN, AND MUCH MORE



360MII THERMOPLASTIC APPLICATOR

This is the second generation of the **360M thermoplastic handliner**. With existing innovations like heavy weight STEEL dies, no die springs, removable tanks for color change and a direct drive bead dispenser, the 360M has long been the tool of choice for professional thermoplastic applicators. The 360MII has over twenty additional innovative refinements and improvements that will further improve performance, enhance safety, and reduce manpower requirements. Our proven and precise all steel extrusion dies remain unchanged and continue to offer full adjustability, producing razor sharp lines. Trantex dies are available in various line widths from 4" to 24" with double 4" and 6" configurations.



360 lb. Material Tank – Large Capacity Tank

- Removable/interchangeable in seconds for quick color changes
- Standard Auger agitation
- Automatic ignition system

All Steel Extrusion Dies

- Superior Heavyweight all Steel Extrusion Dies with positive push/pull actuation
- Line widths of 4" to 24" available.
- Widest, single pass die offering of 16", 18", and 24" - saves material used while reducing labor hours

Variable Width Glass Bead System

- 4", 6", 8", 10", 12" and dual 4" widths standard (custom sizes upon request)

Hand Torch

- Improved convenient hand torch

Lockable Rear Caster

- Lever activated straight lock or swivel with parking brake



Unique lever allows operator to raise and lower the pointer eliminates the need for second person when approaching curbs or obstacles.

All-steel heat-treated dies are available in 4", 5", 6", 8", 12", 16", 18", 24" – dual 4" and 6" die widths.



Optional Equipment

- Thermostat system
- Quick change 2nd color tank
- Quick Melt System to allow rapid melting of material in tank
- Attachment kit to Line Driver system for self propulsion
- Individual, smaller 4" or 6" bead dispensers
- Double drop bead system
- Full lighting kit with green lazer, flood light, and rechargeable battery kit.

360QMII THERMOPLASTIC MELTER/APPLICATOR

The 360QMII is the Quick Melt version of the 360MII applicator with greatly reduced melt times yet maintains the same great portability. The 360QMII helps bridge the gap between an applicator and premelter. A perfect choice for customers looking for increased production without the additional investment of an external premelter. The 360QMII can double and even triple production rates with only a moderate increase in price.

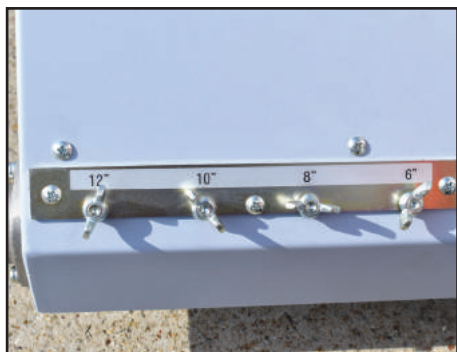


360QMII Unique Features

- 14" auger system. This auger is 40% larger, complimenting the new burner system. More intense heat requires more effective agitation.
- "System matched" HO burner system. Delivers over twice the BTU's and distributes over a greater area for more even heat transfer and quicker melt times
- Choose 360 lb. tanks or 265 lb. tanks based on need
- Tanks are removable and interchangeable for same machine color change
- Exclusive direct drive bead dispenser

Melts and applies up to 30 bags per day

- Better line quality due to more accurately held temperatures
- Fast melt times of 2-3 times faster
- Less standing around...waiting
- Automatic temperature control standard
- Reduces cost per foot of applied



Intuitive bead dispenser quickly adjusts from 4", 6", 8", 10", 12" and dual 4" widths



Operator located die burner controls



14" Auger agitation with bottom blade

Increase melting time as well as production

360SP SELF-PROPELLED THERMOPLASTIC APPLICATOR

The 360SP (Self-Propelled) Thermoplastic Applicator is Honda engine powered to travel easily both uphill and downhill taking the "work" out of thermoplastic application. The self-propelled feature also is helpful when long runs of roadwork are involved, so the operator can concentrate on guidance rather than pushing. The SP maintains a small footprint, making it nimble for tight detail work. The SP can be manually pushed, or use the self-propelled feature to efficiently meet all job site requirements in one compact package.



Perfect for long runs of roadwork



Unique steering system that allows for straight steering or preset radius

Auto Propulsion System

- Hydrostatic drive with speeds up to 4 mph (7 kph)
- Drive Engine
- Propane fired Honda engine

All Steel Extrusion Dies

- Heat-treated steel, available in 4", 5", 6", 8", 12", 16", 18", 24" and dual 4" & 6" widths
- No drip, clean cut on/off operation
- Push/pull actuation keeps perfect die-to-road surface contact

Variable Width Bead Systems

- Optional double drop bead systems available
- 4", 6", 8", 10", 12", and dual 4" bead widths (custom sizes upon request)

360 lb. Material Tank Capacity

- Removable/interchangeable for quick color changes

Optional Equipment

Operator's Sully

- Adjustable seat provides additional propane storage
- Can be removed in seconds for detail work

Extra Material Tank

- Allows on-the-spot color changes

Bituminous Tank

- 300 lb. capacity with one dispensing valve

Double Drop Bead System

- For improved luminosity

Auto Thermostat

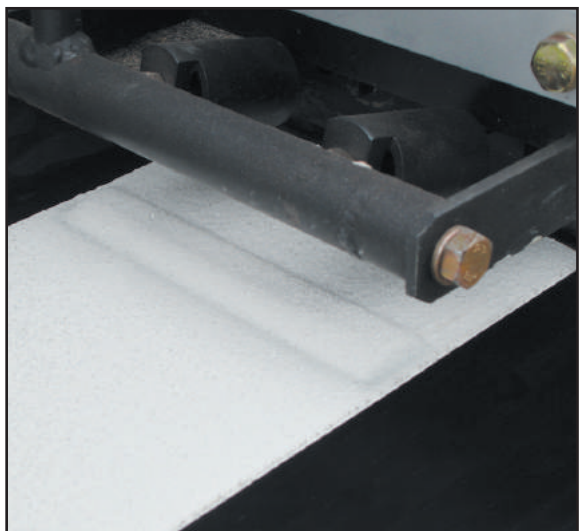
- Regulates material temperature automatically

Automatic agitation system

- Continuous agitation of molten material
- LED flood light and green dot laser pointer with rechargeable battery

360SPP SELF-PROPELLED PROFILE THERMOPLASTIC APPLICATOR

The Model 360SPP (Self-propelled PROFILE) applies profile thermoplastic lines. Profile lines with a handliner are unique as this application is typically limited to truck systems. Allows application of thin mil as low as 25 mils. Instantly change the length, height, and the profile spacing "on the fly" all from the dash-mounted controls. This adjustability allows you to precisely dial in both auditory and vibratory notification. Line markings that double as rumble strips perfectly placed in a portable walk behind package.



Rumble strips perfectly placed

Auto Propulsion System

- Hydrostatic drive with speeds up to 4 mph (7 kph)

Drive Engine

- Propane fired Honda engine

Profile Dies

- 4", 5", 6", 8", 12", or 16" profile dies available
- Length and spacing of profile are completely adjustable

Variable Width Bead Systems

- 4", 5", 6", 8", 10", 12", bead widths
(custom sizes upon request)

360 lb. Material Tank Capacity

- Removable/interchangeable for quick color changes

Automatic Agitation System

- Continuous agitation of molten material

Auto Thermostat

- Regulates material temperature automatically

Hand Torch

- Standard for numerous operations

Compact Size

- Weight – 600 lbs.

Includes unique steering system that allows for straight steering or preset radius in curves and will not track over lines

Optional Equipment

Extra Material Tank

- Allows on the spot color changes

Double Drop Bead System

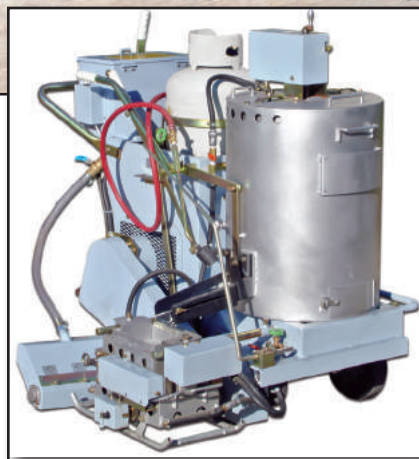
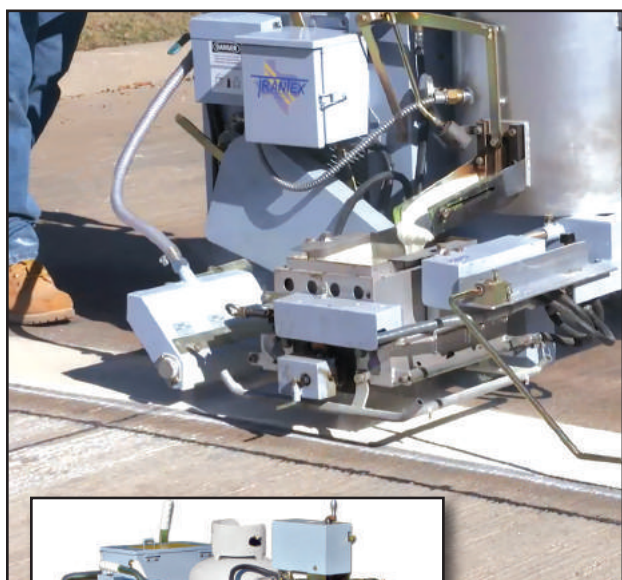
- For improved luminosity

Operators Sulky

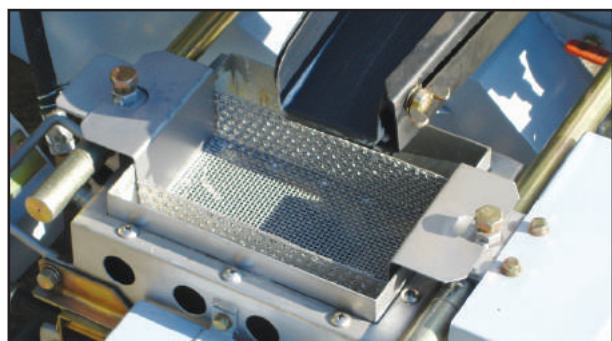
- Adjustable padded seat provides extra propane storage

360SPS SELF-PROPELLED SPRAY THERMOPLASTIC APPLICATOR

The Model 360SPS (Self-propelled SPRAY) atomizes thermoplastic for a fine spray pattern with razor sharp edges and a smoother finish. There is no die, therefore the spray device makes NO CONTACT with the road surface. This is ideal for irregular applications where the die-to-surface interaction may negatively affect line performance.



Application
as low as
25 mils



4", 5", 6", 8", 12", and dual 4"
Airless spray devices

Auto Propulsion System

- Hydrostatic drive with speeds up to 4 mph (7 kph)

Drive Engine

- Propane fired Honda engine

Airless Spray Devices

- 4", 5", 6", 8", 12", 16" double line airless spray guns available
- Spray thickness: 25 mils (.6mm) - 125 mils (3.0mm)

Variable Width Bead Systems

- 4", 6", 8", 10", 12", and dual 4" bead widths

360 lb. Material Tank Capacity

- Removable/interchangeable for quick color changes. (custom sizes upon request)

Automatic Agitation System

- Continuous agitation of molten material

Auto Thermostat

- Regulates material temperature automatically

Compact Size

- Weight – 600 lbs.

Includes unique steering system that allows for straight steering or preset radius in curves and will not track over lines

Optional Equipment

Extra Material Tank

- Allows on the spot color changes

Double Drop Bead System

- For improved luminosity

Operators Sulky

- Adjustable padded seat provides extra propane storage

TT-SERIES CUSTOM THERMOPLASTIC PREMELTER SYSTEMS

The TT-Series Thermoplastic Premelter offers the ability to adapt to many transport options. Twenty-foot power cords, LP hoses, and hydraulic hoses allow LP bottles, power-pack, and premelter to be mounted independently for added safety and versatility. TT Premelter Systems are available in many capacities and in single or dual configurations.



Custom colors are available

Optional features include:

- Stainless steel knife gate valves
- Oil-jacketed cylinders
- Overnight heaters (oil jacketed only)
- Diesel power-pack engines
- Custom specified engine
- Forklift pockets
- Custom operator decks
- California compliant engines



Digital Thermostats with automatic spark ignition systems allowing burners to be ignited with a simple toggle switch.



Flash-safe material feed doors are designed to prevent injury to operator.



Burner ring slides out on rack, allowing for easy service of jet burners.

TT-SERIES TRAILER MOUNTED CUSTOM THERMOPLASTIC PREMELTER & APPLICATOR SYSTEMS

The TT Series Thermoplastic Premelter and Applicator Trailer packages are the perfect solution for those looking for an all-inclusive mobile thermoplastic workstation. These custom-built packaged systems include everything you need for high quality and high production thermoplastic application. The premelters themselves are the model of efficiency, benefiting from years of premelter fabrication. The kettle design, agitation, burners, thermostat system, insulation type, and outer skin configuration all optimize the speed of melt and recovery time. Trailers are custom-built from the ground up for each premelter giving you the opportunity to add any special features or size to best meet your operational needs.

Shown with optional:

- Hydraulic lift gate, and flashers
- Low and high deck trailer configurations available



We can custom build any trailer to your specifications



Thermoplastic Premelter Standard Sizes

Model Number	Material Capacity	Burner Rating	Standard Engine	Agitation
TT1000SH Single Unit	1000 LBS.	200,000 BTU	9.5 HP LP Electric Start	Hydraulic
TT1000DH Dual Unit	2000 LBS. (2 X 1000)	200,000 BTU X 2	9.5 HP LP Electric Start	Hydraulic
TT1500SH Single Unit	1500 LBS.	275,000 BTU	9.5 HP LP Electric Start	Hydraulic
TT1500DH Dual Unit	3000 LBS. (2 X 1500)	275,000 BTU X 2	9.5 HP LP Electric Start	Hydraulic
TT2000SH Single Unit	2000 LBS.	325,000 BTU	9.5 HP LP Electric Start	Hydraulic
TT2000DH Dual Unit	4000 LBS. (2 X 2000)	325,000 BTU X 2	10 HP LP Electric Start	Hydraulic
TT3000SH Single Unit	3000 LBS.	400,000 BTU	15 HP LP Electric Start	Hydraulic
TT3000DH Dual Unit	6000 LBS. (2 X 3000)	400,000 BTU X 2	15 HP LP Electric Start	Hydraulic

Standard features include:

- LP bottle racks
- LP-fired hydraulic power supply
- Handliner loading ramp
- Safety feed doors
- Tandem axles/electric brakes
- All-steel trailer floor

Optional features include:

- Hydraulic lift gate/crane (in lieu of ramp)
- Rotating beacons, warning lights, arrow boards
- Diesel engine/burner (in lieu of propane Engine)
- Oil-jacketed premelter
- Die storage racks
- Overnight heating system (oil jacketed only)

Specifications and ratings on units are subject to change without notice.

T-SERIES STANDARD THERMOPLASTIC PREMELTER SYSTEMS

The T-Series is the ideal product for those requiring a smaller-packaged thermoplastic premelter. The unique combination of thermoplastic capacity and low investment cost make this one of the lowest cost-per-pound values of any available premelter.

- Insulated steel tank boasts a 720 lb. or 1250 lb. material capacity
- Quick-access burner simplifies burner maintenance
- Aggressively-sized ring burner and concave tank bottom improve melt times
- Reliable, accurate, and simple thermostat lights with the flip of a switch
- Forklift slots are conveniently located, allowing rapid install and removal from rear or side (4 point is single only)
- Hydraulic power packs included
- Sold as a self-contained unit – trailer or trailer mount packages available
- Higher capacity models available

Optional equipment:

- Dual (two color tanks)
- Trailer or vehicle mounted
- Customized build by request
- CA compliant engine
- Integral or remote powerpack



T-Series trailer mounted standard premelter & applicator package



720 Single



1250 Dual

T400SM QUICKMELT MANUAL PREMELTER

The T400SM is designed to increase production of smaller 200 to 265 pound handliners. Traditionally, handliners have had just enough BTU's to keep material warm, and fall short of effective on-board melting. The T400SM weighs in at only 294 pounds. It has a tank capacity of 400 pounds for a total combined weight of 694 pounds. This allows comfortable and safe use with trucks as small as a half ton. The material tank and baseplate are separable. This allows rapid color change (with the optional second tank) and also aids in 2 person loading and unloading without a forklift. This allows two people to comfortably load and assemble.

Features and Benefits:

- 100,000 BTU's to double, triple or even quadruple your production.
- A separate premelter allows continuous service.
- Single or dual premelter capability designed to be used in a half ton truck.
- Light weight components (194 lbs. and 100 lbs.) allows fast two person loading and unloading
- More consistent and stable temperatures improve line quality.



Shown above installed in a half ton truck
Also included - accessory torch with 4 ft. hose (not shown)



High output 100,000 BTU burner



Four lifting handles for easy 2 man tank removal



Oversized 14" auger with bottom bead sweep

2001 & 2001-2 TRAILER BITUMEN APPLICATOR

The Model 2001 Bitumen Applicator Trailer System dramatically increases production while minimizing the back-breaking redundant work of marker and button application. At the same time, application times can be cut in half. Easily pulled by a regular size pickup truck. Innovative low trailer seating station allows the operator easy access to markers, the dispensing wand, foot pedal dispensing control switch, and the pavement surface. The Model 2001 includes a single-side configuration while the 2001-2 includes a second seat and dispenser, allowing simultaneous edge and center line application

- 2000 watt generator
- 2.50 CFM compressor
- 8 HP LP engine
- Power agitation
- Optional electric start
- 39 gal. material tank
- 60,000 BTU burner system
- Left front fold down seat
- Locking battery box
- All pipe flow line with 18" travel
- Foot pedal dispensing control switch
- Solid state controller with LED display



RBM300 BITUMEN APPLICATOR

The Model RBM300 is a fully equipped bituminous applicator capable of switching from a walk-behind unit to a self-propelled unit in moments. The RBM300 with the optional Graco LineDriver is the only one-man-operation, auto-propelled bitumen applicator on the market, and still portable enough to be transported on a regular pickup truck. The unit comes standard with an automatic thermostat system, material thermometer, and external hand torch for burner lighting and discharge valve heating. A storage basket is located within easy reach of the operator and provides ample space for markers or bitumen.



Fast start-up time, high capacity and maneuverability, providing safe and efficient method for road marker application

- 25 gal. (300 lb) (136 kg) capacity
- Two discharge valves
- 60,000 BTU burner system controlled by an automatic thermostat complete with safety pilot valve
- Foot brake
- Marker storage basket
- All-steel kettle
- Weight: 250 lbs. (113 kg) – empty

50150 BITUMEN APPLICATOR

The Model 50150 is an economical solution for marker application and/or crack fill. At just under 90 pounds, the 50150 is portable and easy to maneuver. The unit rides on two solid rubber tires on the front and two swivel casters on rear. An optional marker storage basket may be added, as well as an optional second discharge valve.



- 65 lb. (30 kg.) capacity
- One discharge valve on right side of kettle
- Optional second discharge valve on left side of kettle available
- One 20,000 BTU burner controlled by a regulating valve
- LP bottle cage supports 20"-30" lb. tanks
- Two rear swivel wheels for maneuverability
- Lightweight: 90 lbs. (40 kg) – empty
- Optional thermostat control available

20HD ROTARY LINE REMOVER



Pin cutters available in 24", 48", and 72"



The 20HD line remover offers a rotary design that delivers faster removal rates while eliminating the continuous scarring associated with drum style line removers. The unique design of the 20HD enables wider single pass coverage allowing the operator to instantly range from 4" to 24" widths for maximum removal volume per pass. This same flexibility pinpoints the 20HD to the precise removal area without having to change drums or cutters, saving you time and money.

- The cutter depth adjustments ensures you only remove the intended material.
- Innovative and adjustable weight system limits vibration to an absolute minimum.
- Cutter options enables the operator the ability to adjust surface pressure toward fastest removal rates to least surface damage and any combination of both.
- Take total control of variable surface depths with the ability to "float" the cutter up and down while removing.

We have several versions to choose from – 20H20, standard 20HD, 20HDFF (Fine Finish) or 20HDEFF (Extra Fine Finish)

Versions:

- **20H20** – metered water system. This newest and most popular system limits airborne particulate with the introduction of metered water.
- **20HD** – standard cutter with infinite cutter depth control ensures removal of only targeted material.
- **20HDFF** – Fine finish does not generate cutter heat, therefore, thermoplastic breaks rather than melts. Cuts clean up and cut time in half.
- **20HDEFF** – Extra fine finish takes surface preservation to another level, once again cutting clean up and cut time even further.

Specifications:

- 13 HP Honda OHV
- Operating: 400 lbs (181 kgs)
- 44"L x 21"W x 34"H (1100mm x 520mm x 865mm)
- Removal Width: 4" – 24" (10-60cm)
- Removal Speed: 1000-5000 linear ft. per hour at 4 inches wide
- Cutter Life: 15,000-30,000 liner feet (4575 – 9150 linear meter)

GRACO GRINDLAZERS



Graco Grindlazer STD DC87 G

- Great option for those smaller jobs
- Easy to reach throttle
- Swivel and fixed front wheel
- Maximum cut width: 8"
- Removal rate (walking): 300 sq ft/hr
- Removal rate (riding): 700 sq ft/hr
- 6.5 HP Honda engine
- Weight 179 lbs. (36 kg)

Graco Grindlazer HP DC89 G

- Three-cog belt optimizes power transfer & load handling
- Eliminates costly downtime
- Front caster wheel system makes turning faster and easy
- Maximum cut width: 8"
- Removal rate (walking): 600 sq ft/hr
- Removal rate (riding): 1300 sq ft/hr
- 9 HP Honda engine
- Weight 300 lbs. (136 kg)



Graco Grindlazer HP DC1013 G

- "Hands-on" cutting deck system for up/down position
- Provides ultimate flexibility for removal and inlay
- Allows deck to "float" when on uneven surfaces
- Maximum cut width: 10"
- Removal rate (walking): 800 sq ft/hr
- Removal rate (riding): 1700 sq ft/hr
- 13 HP Honda engine
- Weight 310 lbs. (141 kg)

Graco Grindlazer HP DC1021 G

- Centrifugal clutch allows easy starting and shut off
- Full adjustable handles for all size users
- Proven front caster wheel system for easy turns
- Maximum cut width: 10"
- Removal rate (riding): 2100 sq ft/hr
- 21 HP Vanguard Engine
- Weight 365 lbs. (165 kg)



GRACO GRINDLAZER (continued)



GrindLazer HP DC1021 G with Reverse "Up-Cut" cutting direction requires the use of a LineDriver. ProStart Safety Switch Interlock System prohibits operation without a LineDriver.



All Graco Grindlazers are LineDriver adaptable.

- Double your production while eliminating user fatigue
- Move between removal jobs without having to push
- Load and unload GrindLazers with ease

Cutters Assemblies



8 Point Flail Tungsten Carbide Cutter

All purpose removal of paint, epoxy and thermoplastic markings, bump-smoothing and anti-slip grooving.



6 Point Miller Tungsten Carbide Cutter

Specifically used for thermoplastic, tape, and epoxy removal.



8 Point Full Cut Tungsten Carbide Cutter

Ultra-premium, long life Full Cut cutter for fine finish asphalt and concrete removal and inlay projects.



Diamond Blade Cutter

Specifically used for concrete and asphalt pavement to groove and/or inlay.

SMITH SPS8 SCARIFIER

For easy surface prep on concrete or asphalt. This heavy-duty, rugged unit cuts a path 8" wide and up to 1/8" deep. Productivity rates of up to 2,000 linear feet/hour. Ideal for removing parking lot lines, leveling high spots, and removing coatings, epoxy, raised sidewalks, flaking paints, thermoplastics, and more.

Part No. 50203-001

- Scarify 350-500 sq. ft. per hr
- Front-mounted lifting handle
- Vacuum port equipped
- Down cut drum rotation
- 9 HP Gas Engine
- Weight 190 lbs (86kg)
- Variable depth adjustment
- Vacuum port with containment shroud
- Bushed drums
- Remote power shut-off
- 2-belt drive system
- Manual operation, not self-propelled



LINELAZER 3400

The LineLazer 3400 is the preferred choice for contractors looking for professional performance and features in a one-gun striper. Handlebar-mounted controls allow for adjusting and fine tuning without stopping the machine. Contoured hand grips ensure smooth, even striping. Electronic pressure controls facilitate accurate starts and stops. This sprayer is ideal for parking lots and seal coat contractors, schools and park departments. Available with or without an LED light kit.



- Rear mount hose wrap
- Easy to reach controls
- Reduced handle bar vibration
- Improved line quality
- Reliable, long-life pump
- Easy to start power
- Easy out pump filter
- Front swivel wheel

LineLazer 3400

Part No. 25M224

- Max Tip Size: 0.027–1 Gun
- Max GPM [LPM]: 0.75 [2.8]
- Max PSI [BAR]: 3300 [227]
- Honda GX Engine: 120CC [4.0]
- Weight LBS. [KG]: 145 [65]

LINELAZER V ES2000

The LineLazer ES 2000 HP Automatic Series is powered by a sealed lead-Acid 100AH AGM battery, allowing it to be used safely indoors while having the power and performance needed for outdoor jobs. "Go Green" with this quiet, fume-free striper! While the automatic guns are a great enhanced feature, some prefer the Standard Series mechanical version which is also available.



Fume Free
Noise Free
Vibration Free

LineLazer V ES2000 HP Standard Or Automatic Series Electric Battery Powered

Std. Part No. 25N550

Auto Part No. 25N551

- Max Tip Size: 0.033 Gun
- Max GPM [LPM]: 0.60 [2.3]
- Max PSI [BAR]: 3300 [227]
- Gun Activation: Manual (Standard Model)
- Gun Activation: Automatic/Manual (Automatic Model)



LINELAZER V 3900

Both the LineLazer V 3900 and 5900 are the clear leaders for two-gun professional stripers and are designed specifically to deliver the most precise and consistent lines in the industry. Materials sprayed are most heavy, low VOC, waterborne, and rubberized traffic paints. This sprayer is ideal for continuous, heavy-duty line striping requirements. Available in standard or automatic.

LineLazer V 3900

Std. Part No. 17H450

Auto Part No. 17H452

- Max Tip Size: 0.036–1 Gun
0.029–2 Guns
- Max GPM [LPM]: 1.25 [4.7]
- Max PSI [BAR]: 3300 [227]
- Honda GX Engine: 120CC [4.0]
- Weight LBS. [KG]: 212 [96]

Automatic features include:

- Includes all standard features PLUS:
 - Automatic paint gun system
 - Semi-automatic guns
 - Data logging information
 - On-board battery power

Standard features include:

- LiveLook display with SmartControl
- EasyMark gun adjustment system
- EZ align wheel system



LINELAZER V 5900

LineLazer V 5900

Std. Part No. 17H455

Auto Part No. 17H457

- Max Tip Size: 0.043–1 Gun
0.029–2 Guns
- Max GPM [LPM]: 1.60 [6.0]
- Max PSI [BAR]: 3300 [227]
- Honda GX Engine: 160 [5.5]
- Weight LBS. [KG]: 232 [105]



LineLazers also available in 1 and 2 gun automatic or mechanical

LINEDRIVER, LINEDRIVER ES, & LINEDRIVER HD

Why walk when you can ride? Graco offers three high-performance LineDrivers to connect to your LineLazer to help you double your striping applications. These LineDrivers provide the most innovative, user-friendly ride-on systems for the professional striping contractor.



LineDriver



LineDriver ES



LineDriver ES

LineDriver - Part No. 262004

- Operating Speed: Up to 10 mph [16 km/h]
Reverse 6 mph [10 km/h]
- Fuel Capacity GAL [LTR]: 0.95 [3.6]
- Honda GX Engine CC [HP]: 160 [5.5]
- Starting System: Manual Pull
- Weight LBS [KG]: 265 [120]

LineDriver ES - Part No. 51 25N-555

- Operating Speed: Up to 10 mph [16 km/h]
Reverse 6 mph [10 km/h]
- Power Supply: 12 Volt Lithium Ion Battery
- On Board 24V Charger:
- Run Time: 8 hours or 12 hrs on Eco-Mode
- Weight LBS [KG]: 545 [247]

LineDriver HD - Part No. 262005

- Operating Speed: Up to 10 mph [16 km/h]
Reverse 6 mph [10 km/h]
- Fuel Capacity GAL [LTR]: 0.95 [3.6]
- Honda GX Engine CC [HP]: 200 [6.5]
- Starting System: ProStart System
- Weight LBS [KG]: 275 [125]



LineDriver HD

LINELAZER V 250SPS

The LineLazer V 250SPS is a stand-on line striping solution for improved visibility and razor sharp lines. High performance striping with the exclusive automatic paint guns makes this LineLazer the preferred striper for professional contractors who demand hydraulic power.

2-Gun Striper- Part No. 17H467

250SPS - 2 Paint Guns

- Max Tip Size: 0.055 - 1 Gun
0.039 - 2 Guns
- Max GPM [LPM]: 2.5 [9.5]
- Max PSI [BAR]: 3300 [227]
- Weight LBS [KG]: 600 [270]
- Honda GX Engine: 390 CC [13.0]



LINELAZER V 250DC

Graco LineLazer V 250DC is ideally suited for airports, municipalities, DOTs or anyone who needs to spray highlight lines or other dual-color striping. Productivity and flexibility are increased by spraying two colors simultaneously in patterns as wide as 36 inches (90 cm).

2-Gun Striper - Part No. 17H473

250DC- 2 Paint and Bead Guns with Pressurized Bead System with 2 Bead Tanks (installed)

- Max Tip Size: 0.055 - 1 Gun
0.039 - 2 Guns
- Max GPM [LPM]: 2.5 [9.5]
- Max PSI [BAR]: 3300 [227]
- Honda GX Engine: 390 CC [13.0]



2-Gun Striper - Part No. 17H474

250DC- 3 Paint and Bead Guns with Pressurized Bead System with 2 Bead Tanks (installed)

- Max Tip Size: 0.055 - 1 Gun
0.039 - 2 Guns
0.031 - 3 Guns
- Max GPM [LPM]: 2.5 [9.5]
- Max PSI [BAR]: 3300 [227]
- Honda GX Engine: 390 CC [13.0]

2-Gun Striper - Part No. 17H471

250DC - 2 Paint Guns

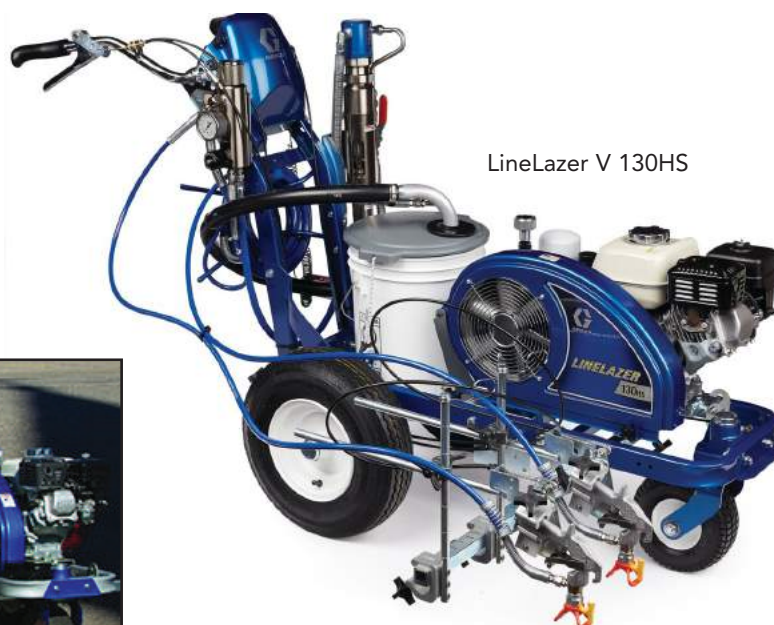
- Max Tip Size: 0.055 - 1 Gun
0.039 - 2 Guns
- Max GPM [LPM]: 2.5 [9.5]
- Max PSI [BAR]: 3300 [227]
- Weight LBS [KG]: 600 [270]
- Honda GX Engine: 390 CC [13.0]

LINELAZER V 130HS & V 200HS

The LineLazer V 130hs and our original LineLazer V 200hs are the preferred hydraulic workhorse airless stripers for your most demanding jobs. Start out with the 130hs and move up to the 200hs as your business grows. Materials sprayed are most heavy, low VOC, waterborne, and rubberized traffic paints. These sprayers are ideal for your continuous, heavy-duty line striping requirements.

LineLazer V 130HS – Part No. 17H448

- Max Tip Size: 0.037 - 1 Gun
0.029 - 2 Guns
- Max GPM [LPM]: 1.3 [4.9]
- Max PSI [BAR]: 3300 [227]
- Weight LBS [KG]: 240 [108]
- Honda GX Engine: 120 CC [4.0]



LineLazer V 130HS



LineLazer V 200HS – Part No. 17H461

- Max Tip Size: 0.047 - 1 Gun
0.034 - 2 Guns
- Max GPM [LPM]: 2.15 [8.14]
- Max PSI [BAR]: 3300 [227]
- Weight LBS [KG]: 277 [125]
- Honda GX Engine: 200 CC [6.5]



LineLazer V 200HS

Part No. 16R955 - For 1 Gun 200HS Line Striper

Part No. 16R960 - For 2 Gun 200HS Line Striper

Part No. 16R961 - For 1 Gun 250SPS Line Striper

Part No. 16R962 - For 2 Gun 250SPS Line Striper

LINELAZER V 200DC - DOUBLE COLOR

The LineLazer V 200DC Standard Series provides a cost-effective dual color striping solution for smaller applications. Maximize productivity with systems that provide quick and easy adjustments, including the EasyMark Gun Adjustment System, EZ Align Wheel Adjustment System and more.

LineLazer V 200DC

- Max Tip Size: 0.047 - 1 Gun
0.034 - 2 Guns
- Max GPM [LPM]: 2.15 [8.14]
- Max PSI [BAR]: 3300 [227]
- Weight LBS [KG]: 381 [173]
- Honda GX Engine: 200 CC [6.5]

Available in a Standard Series or HP Automatic Series.



LINELAZER V 200 MMA 1:1

The LineLazer 200 MMA 1:1 is a reliable walk-behind solution that delivers superior MMA 1:1 performance and guarantees ratio assurance in a compact and affordable package.



LineLazer V 200 MMA 1:1

1 Gun - Part No. 17Y271

2 Gun - Part No. 17Y512

- Max Tip Size: 0.047 - 1 Gun
0.034 - 2 Guns
- Max GPM [LPM]: 2.15 [8.14]
- Max PSI [BAR]: 3300 [227]
- Weight LBS [KG]: 532 [241]
- Honda GX Engine: 200 CC [6.5]

Available in 1 and 2 gun options

TAPELAZER HP AUTOMATIC

The TapeLazer is a fully-automatic, walk/ride-behind, gas-powered traffic tape applicator that includes key features from our renowned LineLazer V HP Automatic stripers for fast, easy taping applications.

- Apply pavement marking tape at truck speeds - up to 6 mph
- Cut on the fly with a push of a button
- Apply double lines in a single pass
- Apply tape to within 3 inches of a road edge



CH200A AIRLESS LINE STRIPER

Perfect for city/county road marking and airport striping. Carriage easily rolls from side to side for edge line and center line striping. Many options available, such as stainless steel tanks and additional pumps.



atomized air model
also available

Paint System:

- 60 gal. paint capacity - two 30 gal. non-pressure, polyethylene paint tanks
- Two Graco airless paint guns mounted on switchable carriage (Includes hand gun with 50' hose)

Bead System:

- 360 lb. capacity (one pressurized tank)
- Two stainless steel automatic bead guns mounted on switchable carriage

Drive System:

- 617cc, liquid cooled, V-twin, gas engine
- Automatic torque converter, F-N-R
- Rack and pinion steering
- Four wheel hydraulic drum brakes
- Up to 15 mph striping speeds

Spray System:

- One hydraulic hi-pressure airless pump
- 18 HP, air cooled, V-twin, gas auxiliary engine
- 10.6 CFM air compressor
- Electronic skipline system

CH200AT AIRLESS LINE STRIPER

Paint System:

- 80 gal. paint capacity - two 40 gal. non-pressure, polyethylene paint tanks
- Two stainless steel automatic airless spray guns rated at 3000-PSI maximum pressure (includes hand gun with 50' hose)

Bead System:

- 450 lb. capacity (one pressurized tank)
- Beadguns: two Graco automatic double acting guns

Drive System:

- Engine: 4 cylinders, 4 stoke O.H.C.
- Drive Train: 5 speed standard transmission
- Rack and pinion steering
- 5.14 hydraulic ABS brakes
- Up to 25 mph striping speeds

Spray System:

- One hydraulic hi-pressure airless pump
- 18 HP, air cooled, V-twin, gas auxiliary engine
- 10.6 CFM air compressor
- Electronic skipline system



This self-propelled pavement marking truck is a great addition to our line of single operator/one man operation stripers. Designed to apply both reflective and non-reflective, water based traffic paint. Capable of applying two colors in both solid and intermittent line patterns with line widths varying from 2" to 36".

CH400A AIRLESS LINE STRIPPER

The ultimate alternative to a full-size striping truck. The perfect choice for airports and all types of long line jobs. Many options available.



Paint System:

- 120 gal. paint capacity - two 60 gal. non-pressure, polyethylene paint tanks
- Two Graco airless paint guns mounted on switchable carriage (includes hand gun with 50' hose)

Bead System:

- 750 lb. capacity (one pressurized tank)
- Two stainless automatic bead guns mounted on switchable carriage (optional right hand carriage with additional bead gun)

Drive System:

- 657cc, liquid cooled, 27 HP, gas engine
- Drive Train: hi-low three speed synchromesh
- Power assist, tilt wheel steering
- Four wheel hydraulic drum brakes
- Up to 15 mph striping speeds

Spray System:

- Two hydraulic hi-pressure airless pump
- 18 HP, air cooled, V-twin, gas auxiliary engine
- 10.6 CFM air compressor
- Electronic skipline system

GRACO ROADPAK STRIPING SYSTEM

The RoadPak Systems offered are highly productive "modular" striping system that allow complete customization to your operation. There are 20 Ready-to-Stripe Systems available to choose from. These "Modular" striping systems allow truck or integral trailer mount, single or dual pump, with the additional choice of the traditional performance or the higher performing HD packages. The Camera System package is great for single operator choices but also work great with dual operators (front/rear operators).



A RoadPak system with the optional steerable mounted onto a flatbed truck is a low cost option with large striping capabilities!

GRACO ROADPAK STRIPING SYSTEM (continued)

Heavy-Duty RPS 2900 Hydraulic Pump System

The heart of the RoadPak System utilizes the rugged 833 pump(s). With lightning fast changeover and high atomization capability of 2900 psi, you will see the performance difference these workhorse hydraulic pumps deliver in superior wink-free consistent line quality.

Single Pump, Dual Pump, or HD Pump Output

There is always a correct optioned system. Single pump allows one color operation with the capability to color change as need within minutes. Dual pump allows instantaneous color change within seconds or dual color striping applications. With the HD system, you receive upgrades that allow a total pump capacity of up to 10GPM versus 5GPM.



Bead Tank Choices

With bead tank capacity choices of single 450 pound tanks, dual 450 pound tanks or even the massive 1350 pound tank capacity onboard bead capacity should never be an issue. With maximum spray tip support at 2000 psi, our pumps will spray the toughest traffic paints you'll ever need to use. With the new prime valve, you can now recirculate paint to the container keeping it mixed and ready to go.

Video, Articulating Pointer, Rear Operator, Steerable Carriage, Intercom

All are great available optional components that simplify operations and appeal to all experience levels, especially novices to produce consistent and reliable results.

GRACO ROADLAZER ROADPAK SYSTEM



With its modular design, the Graco Roadlazer Roadpak System is designed to be as easy to use as a walk-behind striper with high production speeds normally only found on long line trucks.

- RoadPak 2 pump system
- RoadPak 2-pump/2 gun arm
- Advanced controller
- Heavy-duty modular frame system
- Engine - Kohler® power
- Pressurized bead system
- Bead tank size: 1350 lbs
- Maximum flow rate (GPM): 5
- Maximum working pressure (PSI): 2900
- Mount type: sliding-in mounting frame

Example shown: Option 9 - a truck mounted, 2-color system featuring a 2 pump Roadpak Pump System with a 1,350 lb. Bead Tank, 2-Gun Arm, Advanced Controller and Simple Guide System

GRACO ROADPAK STRIPING SYSTEM

20 Ready to Stripe Systems - you decide. Designed FOR YOU!



RoadPak System
READY-TO-STRIP
STRIPING SYSTEMS



PICKUP TRUCK



UTILITY VEHICLE



TOW-BEHIND



FLATBED TRUCK

		1-Pump RoadPak (5GPM) 450lb Bead Tank Part # 25M701	2-Pump RoadPak (5GPM) 450lb Bead Tank Part # 25M703	2-Pump RoadPak (5GPM) 1350lb Bead Tank Part # 25M704	2-Pump RoadPak HD (10GPM) 1350lb Bead Tank Part # 25M706	Slide-in Mounting Frame Part # 25G627	Trailer Tow-Behind System Part # 24M200
ROADPAK TRUCK-MOUNT SYSTEMS	RPS Option 1 Part # 25D268	●				●	
	RPS Option 2 Part # 25D269	●				●	
	RPS Option 3 Part # 25D270	●				●	
	RPS Option 4 Part # 25D271	●				●	
	RPS Option 5 Part # 25D272		●			●	
	RPS Option 6 Part # 25D273		●			●	
	RPS Option 7 Part # 25D274		●			●	
	RPS Option 8 Part # 25D275		●			●	
	RPS Option 9 Part # 25D276			●		●	
	RPS Option 10 Part # 25D277			●		●	
	RPS Option 11 Part # 25D278			●		●	
	RPS Option 12 Part # 25D279			●		●	
ROADPAK HD TOW-BEHIND SYSTEMS	RPS Option T1 Part # 25M836	●					●
	RPS Option T2 Part # 25M837		●				●
	RPS Option T4 Part # 25M838	●					●
	RPS Option T5 Part # 25M839		●				●
ROADPAK HD TRUCK-MOUNT SYSTEMS	RPS Option HD1 Part # 25D280				●	●	
	RPS Option HD2 Part # 25D281				●	●	
	RPS Option HD3 Part # 25D282				●	●	
	RPS Option HD4 Part # 25D283				●	●	

Select the right pre-configured system for your jobs - now and in the future. With the modular design of the RoadPak System, you can be assured of fast installation of your new striping system. Plus, with the plug-and-play style connections, you'll see just how easy we've made it to install.



1-Pump 2-Gun RoadPak Gun Arm Part # 25M708	2-Pump 2-Gun RoadPak Gun Arm Part # 25M709	2-Pump 3-Gun RoadPak HD Gun Arm Part # 25M710	RoadPak Advanced Controller Part # 25M711	RoadView HD Camera System Part # 24G633	Simple Guide System Part # 24G634	Gun Lift Winch Kit Part # 25M713	Rear Seat Kit Part # 25M716	Steerable Carriage Part # 25M712
●			●		●			
●			●	●	●			
●			●		●	●	●	●
●			●	●	●	●	●	●
	●		●		●			
	●		●	●	●			
	●		●		●	●	●	●
	●		●	●	●	●	●	●
	●		●		●			
	●		●	●	●			
	●		●		●	●	●	●
	●		●	●	●	●	●	●
●			●		●			
	●		●		●			
●			●	●	●			
	●		●	●	●			
		●	●		●	●		
		●	●	●	●	●		
		●	●		●	●	●	●
		●	●	●	●	●	●	●

PROVEN QUALITY - LEADING TECHNOLOGY

GRACO LINELAZER MAJOR ACCESSORIES



15 Gal. Paint Hopper
Part No. 241104



25 Gal. Paint Hopper
Part No. 278452
(for LineLazer)
250SPS & 250DC only



Green Dot Laser
Part No. 25A530
Battery and charger
not included



Lazerguide 2000
Part No. 51 17T-540 Automatic V
Part No. 51 17T-541 Mechanical V
Part No. 51 17T-544 Automatic IV



12" Dispenser
Part No. 245516



6" Dispenser
Part No. 277065



Pointer Guide
25" Part No. 277062
40" Part No. 277063



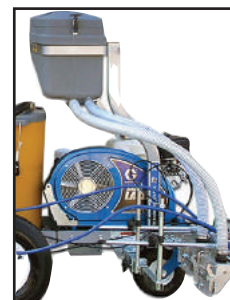
2nd Gun Kit
Part No. 287553

EZ Bead Gravity Dispensing Kits

Kits vary depending on LineLazer unit and line size desire. Glass bead system can be mounted on either side of LineLazer.

Part No. 277065 – Single

Part No. 277064 – Double



LINELAZER RAC® 5 SWITCHTIPS™ – 2 IN (51MM)

286113 – Light film build and sport court applications

LL5213 – Light film build and sport court applications

LL5215 – Light film build and sport court applications

LL5217 – Light film build and alkyd paint applications

LL5219 – Light film build and alkyd paint applications

LINELAZER RAC® 5 SWITCHTIPS™ – 4 IN (102MM)

LL5315 – Light film build for most traffic paints

LL5317 – Light film build for most traffic paints

LL5319 – Light film build for most traffic paints

LL5321 – Medium film build for most traffic paints

LL5323 – Medium film build for most traffic paints

LL5325 – Medium-heavy film build for most traffic paints

LL5327 – Medium-heavy film build for most traffic paints

LL5329 – Heavy film build for most traffic paints

LL5331 – Heavy film build for most traffic paints

LL5333 – Heavy film build for most traffic paints

LL5335 – Heavy film build for most traffic paints



*Various
tips
available*

LINELAZER RAC® 5 SWITCHTIPS™ – 4-8 IN (102-204 MM)

LL5417 – Light film build for all paints and high solids traffic paints

LL5419 – Light film build for all paints and high solids traffic paints

LL5421 – Medium film build for all paints and high solids traffic paints

LL5423 – Medium film build for all paints and high solids traffic paints

LL5425 – Medium-heavy film build for all paints/high solids traffic paints

LL5427 – Medium-heavy film build for all paints/high solids traffic paints

LL5429 – Heavy film build for all paints and high solids traffic paints

LL5431 – Heavy film build for all paints and high solids traffic paints

LL5435 – Heavy film build for all paints and high solids traffic paints

LINELAZER RAC® 5 SWITCHTIPS™ – 8-12 IN (204-305 MM)

LL5621 – Light film build and all traffic paint applications

LL5623 – Medium film build and all traffic paint applications

LL5625 – Medium film build and all traffic paint applications

LL5627 – Medium-heavy film build and all traffic paint applications

LL5629 – Medium-heavy film build and all traffic paint applications

LL5631 – Medium-heavy film build and all traffic paint applications

LL5635 – Heavy film build and all traffic paint applications

LL5639 – Heavy film build and all traffic paint applications

SAFETY VESTS



Plain Vest

- Highly visible polyester mesh
 - Adjustable hook/ loop closure
 - Elastic side straps
 - Available in Orange or Lime
- Part No. 30122-001
One size fits most



Reflective Vest

- Highly visible polyester mesh
 - Adjustable hook/ loop closure
 - 1" reflective stripes
 - Available in Orange or Lime
- Part No. 30122-R01
One size fits most



Class 2 Chevron Reflective Vest

- Polyester woven tricot
 - 3 Chevron stripes on back
 - 3M Scotchlite reflective trim
 - Conforms to ANSI/ISEA 107
- Part No. 30124-XXX
One size fits most



Class 2 Reflective Vest - Contrast

- 100% polyester mesh
 - 3 interior pockets
 - 3M Silver retroreflective trim
 - Conforms to ANSI/ISEA 107
- Part No. 30123-XXX
Available Sizes: Med - 5X



Class 2 Surveyors Vest

- 100% polyester woven oxford
 - 3M retroreflective trim
 - Conforms to ANSI/ISEA 107
 - 4 multiple div. pockets
 - Available in Orange or Lime
- Part No. 30124-XXY
Available Sizes: Med - 5X



Class 2 Reflective Vest - Orange

- 100% polyester woven mesh
 - Hook/loop or Zipper closure
 - 3M Silver retroreflective trim
 - Conforms to ANSI/ISEA 107
- Part No. 30124-XXX
Available Sizes: Med - 5X



Class 2 Reflective Vest - Lime

- 100% polyester woven mesh
 - Hook/loop or Zipper closure
 - 3M Silver retroreflective trim
 - Conforms to ANSI/ISEA 107
- Part No. 30126-XXX
Available Sizes: Med - 5X



Class 3 Reflective Vest - Lime

- 100% polyester woven mesh
 - Hook/loop front closure
 - 3M Silver retroreflective trim
 - Conforms to ANSI/ISEA 107
- Part No. 30128-XXX
Available Sizes: Med - 5X



Class 3 Reflective Vest - Orange

- 100% polyester woven mesh
 - Hook/ loop front closure
 - 3M Silver retroreflective trim
 - Conforms to ANSI/ISEA 107
- Part No. 30130-XXX
Available Sizes: Med - 5X

3M UV SAFETY HARD HATS



These 3M safety hard hats feature Uvicator sensor, which lets wearer know when to replace hard hat due to UV exposure. Suspension sits lower on the head to reduce pressure and increase security. Smooth, easy running ratchet suspension

Product	Part No.
3M UV Hard Hat White	30150-00W

3M UV FULL BRIM SAFETY HARD HATS

These 3M protective full brim hard hats feature Uvicator sensor, which lets wearer know when to replace hard hat due to UV exposure. Comfortable 4-point ratchet suspension and standard brow pad.



Product	Part No.
3M UV Full Brim White	30151-00W
3M UV Full Brim Yellow	30151-00Y

*Meets requirements of ANSI/ISEA Z89.1-2009
- Type 1, Class C, G and E*

3M SECUREFIT PROTECTIVE EYEWEAR

Safety glasses have been standard equipment in construction zones for decades. We carry a variety of styles and tinting options; simply choose the best design to suit your job site. Remember: the more comfortable, protective, and convenient their glasses are to use, the more likely your employees are to wear them! Please note that regulations for safety glasses may vary from state to state (and from project to project, depending upon whether the job in question is funded at a federal, state, or municipal level). We strongly recommend verifying all relevant rules and standards prior to placing your order.



Product	Part No.
3M Gray SF402AF	30121-101
3M Clear SF401AF	30121-001
3M Gray SF202AF	30121-100

determining traffic paint yields

Square Footage:

One gallon of paint covers 1600 square feet when applied at a thickness of one mil (.001"). Divide 1600 by the mil thickness to be applied to determine the square footage per gallon

Standard Waterborne Paint Example:

1600 square feet / 15 mils = 106.7 square feet per gallon

High Build, Durable Waterborne Paint Example:

1600 square feet / 25 mils = 64 square feet per gallon

Linear Footage:

One square foot equals 12" of linear line 12" wide.

Divide 12 by the desired line width to find linear feet per square foot.

Multiply the linear feet per square foot by the square foot per gallon to get linear feet per gallon.

Standard Waterborne Paint Example:

4" wide line: $12 / 4 = 3 \times 106.7 = 320$ linear feet per gallon @ 15 mils.

6" wide line: $12 / 6 = 2 \times 106.7 = 213.3$ linear feet per gallon @ 15 mils.

High Build, Durable Waterborne Paint Example:

4" wide line: $12 / 4 = 3 \times 64 = 192$ linear feet per gallon at 25 mils.

6" wide line: $12 / 6 = 2 \times 64 = 128$ linear feet per gallon at 25 mils.

Paint Quantity Needed:

The amount of paint needed to stripe one mile of roadway is determined by dividing linear feet to be painted by linear feet per gallon.

Standard Waterborne Paint Example:

$5280 / 320 = 16.5$ gallons per mile at 4" wide and 15 mils thick.

$5280 / 213.3 = 24.75$ gallons per mile at 6" wide and 15 mils thick.

High Build, Durable Waterborne Paint Example:

$5280 / 192 = 27.5$ gallons per mile at 4" wide and 25 mils thick.

$5280 / 128 = 41.3$ gallons per mile at 6" wide and 25 mils thick.

The amount of paint needed to apply legends can be similarly calculated (using 15 mil thickness):

8' STOP requires 23.5 square feet of coverage. At 15 mils, 1 gallon will apply 106.7 linear feet of 12" line, which equates to 106.7 square feet. Divide coverage area needed ($23.5 / 106.7 = 0.22$ gallons, at 15 mils).

Glass Beads:

Apply Standard Highway Glass Beads at the rate of:

6 – 8 pounds per gallon of Standard Traffic Paint OR High Build, Durable Paint.

10 – 12 pounds per 100 square feet of thermoplastic.

Apply Type III Airport Beads at the rate of:

10 pounds per gallon of Standard Traffic Paint OR High Build, Durable Paint.



APPROXIMATE THERMOPLASTIC YIELDS

Quantities are based on 6" wide lines using Alkyd material and may vary with application methods and pavement texture.

Spray (Air or Airless) and Ribbon/Extrude				Screed/Extrude – Dense Grade Substrate				Screed/Extrude – Open Grade Substrate			
Mils.	Ton/mile	lb/LF	LF/ton	Mils.	Ton/mile	lb/LF	LF/ton	Mils.	Ton/mile	lb/LF	LF/ton
60	0.812	.308	6,500	60	0.903	.342	5,850	60	1.08	.410	4,875
90	1.23	.461	4,334	90	1.30	.492	4,063	90	1.50	.570	3,510
				125	1.81	.684	2,925	125	1.89	.716	2,795

Word and Symbol Messages (thermoplastic lbs.)

	Sq. ft.	60 mil	90 mil	125 mil		Sq. ft.	60 mil	90 mil	125 mil
STOP	23.5	16.1	24.1	33.5	EXIT	23.0	15.7	23.6	32.8
ONLY	23.0	15.7	23.6	32.8	STRAIGHT ARW	12.5	8.5	12.8	17.8
XING	23.0	15.7	23.6	32.8	TURN ARW	15.5	10.6	15.9	22.1
RIGHT	29.5	20.2	30.3	42.0	COMBO ARW	28.5	19.5	29.2	40.6
AHEAD	28.5	19.5	29.2	40.6	RXR	69.0	47.2	70.8	98.2
LEFT	23.0	15.7	23.6	32.8	R	5.7	3.9	5.8	8.2
TURN	23.5	16.1	24.1	33.5	SCHOOL	35.0	23.9	35.9	49.9

www.translineinc.com
sales@translineinc.com



Look for all locations - listed on the inside front cover



www.translineinc.com
sales@translineinc.com